



M200

USER/INSTALLER MANUAL



motorline[®]
PROFESSIONAL



SAFETY INSTRUCTIONS	6
THE DEVICE	11
TECHNICAL CHARACTERISTICS	11
VISUAL APPEARANCE	12
INSTALLATION	14
WIRING AND FIXING	14
IMPORTANT NOTES	15
CONNECTIONS	15
PRE-CONFIGURATION	16
PERMISSION LEVELS	16
CONFIGURATION BY BLUETOOTH	17
CONFIGURATION BY SMS www.torautomatic.hr	20
SMS FUNCTIONS	21
OWNER SETTINGS	26
ADD OWNER	26
CHANGE OWNER PASSWORD	26
TRANSFER OF OWNER	26
BLOCK/UNBLOCK SMS RESPONSES	26
EDIT OWNER NAME	27
NEW VISITOR/ADMINISTRATOR MOBILE DEVICE	27
ADMINISTRATOR SETTINGS	28
CHANGE VISITOR TO ADMINISTRATOR	28
CHANGE ADMINISTRATOR TO VISITOR	28
ADD ADMINISTRATOR WITH JUST THE NUMBER	28
ADD ADMINISTRATOR WITH JUST THE NUMBER AND NAME	28
DELETE ADMINISTRATOR	28
DELETE ALL ADMINISTRATORS	29

CHANGE PASSWORD	29
RESET PASSWORD	29
EDIT ADMINISTRATOR NAME	29
VISITORS SETTINGS	30
ADD VISITOR WITH JUST THE NUMBER	30
ADD VISITOR WITH JUST THE NUMBER AND NAME	30
ADD VISITOR WITH ACCESS MANAGEMENT	30
ADD VISITOR WITH ACCESS MANAGEMENT	31
DISABLE VISITOR DAYS LIMIT	32
EDIT VISITOR ENTRY AND EXIT TIMES	32
DELETE ALL VISITORS	32
DELETE VISITOR	32
EDIT VISITOR NAME	33
EDIT VISITOR START DATE	33
ACTIVATE AND SET VISITOR DAYS LIMIT	33
CHANGE PASSWORD	33
	www.torautomatic.hr
CHECK M200 INFORMATION	34
CHECK USER	34
CHECK A VISITOR'S HOURS	34
CHECK LIMITATION BY DAYS OF THE WEEK	34
CHECK A VISITOR'S START DATE	35
CHECK DURATION OF DAYS OF A VISITOR	35
CHECK SIM CARD 4G SIGNAL	35
CHECK LAST CALL	35
HEAR ALARM SOUND	35
CHECK MICROSIM CARD BALANCE	36
CHECK RELAY 1 STATUS	36
CHECK RELAY 1 IMPULSE TYPE	36
CHECK RELAY 1 TIME	36
CHECK RELAY 1 OPERATING MODE	36
CHECK RELAY 2 STATUS	37
CHECK RELAY 2 IMPULSE TYPE	37






INDEX

CHECK RELAY 2 TIME	37
CHECK RELAY 2 OPERATING MODE	37
CHECK INPUT 1 STATUS	37
CHECK INPUT 2 STATUS	37
RELAY 1 CONFIGURATION	38
ACTIVATE RELAY 1	38
DISABLE RELAY 1	38
CHANGE RELAY 1 TIME	38
CHANGE RELAY 1 IMPULSE TYPE	38
ACTIVATE ACTION MODE BY CALL ONLY	39
RELAY 2 CONFIGURATION	40
ACTIVATE RELAY 2	40
DISABLE RELAY 2	40
CHANGE RELAY 2 IMPULSE TYPE	40
CHANGE RELAY 2 TIME	40
M200 CONFIGURATION	41
CHANGE BLUETOOTH NAME	41
CHANGE BLUETOOTH NAME	41
RESTORE FACTORY SETTINGS	41
SET UP DAILY ROUTINES	43
CONFIGURAR FEEDBACKS	45
ACTIVATE OPERATOR SMS FORWARDING	46
ACTIVATE RELAY 1 WITHOUT CHECKING NUMBER / DOUBLE SMS AUTHENTICATION	47
MOTORLINE PORTAL	48
REGISTRATION ON THE PORTAL	48
BACK TO M200 WITHOUT MOBILE DATA PAUSE IN DATA TRANSMISSION	50
CONFIGURE AS WIEGAND READER	51
ACTIVATE READER MODE	52
AUTOMATICALLY ADD USERS TO THE READER	53
MANUALLY ADD USERS TO THE READER	54

USE AS ALARM	55
CONFIGURE AS AN ALARM COMMUNICATOR	55
ACCESS HISTORY	57
ACTIVATE ACCESS HISTORY	57
CHECK HISTORY IN THE APP	57
RECORD OF HISTORY IN CSV FILE	58
IMPORT/EXPORT USERS	59
CREATE A LIST OF USERS THROUGH EXCEL	59
INFORMATION TO USE IN THE EXCEL DOCUMENT	60
UPLOAD THE LIST AND SEND IT TO THE DEVICE	60
TROUBLESHOOTING	61
CONFORMITY DECLARATION	62

www.torautomatic.hr

SAFETY INSTRUCTIONS

	<p>This product is certified in accordance with European Community (EC) safety standards.</p>
RoHS	<p>This product complies with Directive 2011/65/EU of the European Parliament and of the Council, of 8 June 2011, on the restriction of the use of certain hazardous substances in electrical and electronic equipment and with Delegated Directive (EU) 2015/863 from Commission.</p>
	<p>(Applicable in countries with recycling systems). This marking on the product or literature indicates that the product and electronic accessories (eg. Charger, USB cable, electronic material, controls, etc.) should not be disposed of as other household waste at the end of its useful life. To avoid possible harm to the environment or human health resulting from the uncontrolled disposal of waste, separate these items from other types of waste and recycle them responsibly to promote the sustainable reuse of material resources. Home users should contact the dealer where they purchased this product or the National Environment Agency for details on where and how they can take these items for environmentally safe recycling. Business users should contact their vendor and check the terms and conditions of the purchase agreement. This product and its electronic accessories should not be mixed with other commercial waste.</p>
	<p>This marking indicates that batteries should not be discarded like other household waste at the end of their useful life. Batteries must be delivered to selective collection points for recycling.</p>
	<p>The different types of packaging (cardboard, plastic, etc.) must be subject to selective collection for recycling. Separate packaging and recycle it responsibly.</p>
	<p>This marking indicates that the product and electronic accessories (eg. charger, USB cable, electronic material, controls, etc.) are susceptible to electric shock by direct or indirect contact with electricity. Be cautious when handling the product and observe all safety procedures in this manual.</p>

SAFETY INSTRUCTIONS

GENERAL WARNINGS

- This manual contains very important safety and usage information. Read all instructions carefully before beginning the installation/usage procedures and keep this manual in a safe place that it can be consulted whenever necessary.
- This product is intended for use only as described in this manual. Any other enforcement or operation that is not mentioned is expressly prohibited, as it may damage the product and put people at risk causing serious injuries.
- This manual is intended firstly for specialized technicians, and does not invalidate the user's responsibility to read the "User Norms" section in order to ensure the correct functioning of the product.
- The installation and repair of this product may be done by qualified and specialized technicians, to assure every procedure are carried out in accordance with applicable rules and norms. Nonprofessional and inexperienced users are expressly prohibited of taking any action, unless explicitly requested by specialized technicians to do so.
- Installations must be frequently inspected for unbalance and the wear signals of the cables, springs, hinges, wheels, supports and other mechanical assembly parts.
- Do not use the product if it is necessary repair or adjustment is required.
- When performing maintenance, cleaning and replacement of parts, the product must be disconnected from power supply. Also including any operation that requires opening the product cover.
- The use, cleaning and maintenance of this product may be carried out by any persons aged eight years old and over and persons whose physical, sensorial or mental capacities are lower, or by persons without any knowledge of the product, provided that these are supervision and instructions given by persons with experienced in terms of usage of the product in a safe manner and who understands the risks and dangers involved.

SAFETY INSTRUCTIONS

- Children shouldn't play with the product or opening devices to avoid the motorized door or gate from being triggered involuntarily.
- If the power cable is damaged, it must be replaced by the manufacturer, after-sales service or similarly qualified personnel to avoid danger.
- The device must be disconnected from the electrical network when removing the battery.
- Ensure that blocking is avoided between the actuated part and its fixed parts due to the opening movement of the actuated part.

WARNINGS FOR TECHNICIANS

- Before beginning the installation procedures, make sure that you have all the devices and materials necessary to complete the installation of the product.
- You should note your Protection Index (IP) and operating temperature to ensure that is suitable for the installation site.
- Provide the manual of the product to the user and let them know how to handle it in an emergency.
- If the automatism is installed on a gate with a pedestrian door, a door locking mechanism must be installed while the gate is in motion.
- Do not install the product "upside down" or supported by elements do not support its weight. If necessary, add brackets at strategic points to ensure the safety of the automatism.
- Do not install the product in explosive site.
- Safety devices must protect the possible crushing, cutting, transport and danger areas of the motorized door or gate.
- Verify that the elements to be automated (gates, door, windows, blinds, etc.) are in perfect function, aligned and level. Also verify if the necessary mechanical stops are in the appropriate places.
- The control board must be installed on a safe place of any fluid (rain, moisture, etc.), dust and pests.
- You must route the various electrical cables through protective tubes, to protect them against mechanical exertions, essentially on

SAFETY INSTRUCTIONS

the power supply cable. Please note that all the cables must enter the control board from the bottom.

- If the automatism is to be installed at a height of more than 2,5m from the ground or other level of access, the minimum safety and health requirements for the use of work equipment workers at the work of Directive 2009/104/CE of European Parliament and of the Council of 16 September 2009.
- Attach the permanent label for the manual release as close as possible to the release mechanism.
- Disconnect means, such as a switch or circuit breaker on the electrical panel, must be provided on the product's fixed power supply leads in accordance with the installation rules.
- If the product to be installed requires power supply of 230Vac or 110Vac, ensure that connection is to an electrical panel with ground connection.
- The product is only powered by low voltage safety with control board (only at 24V motors). www.torautomatic.hr
- Parts/products weighing more than 20 kg must be handled with special care due to the risk of injury. It is recommended to use suitable auxiliary systems for moving or lifting heavy objects.
- Pay special attention to the danger of falling objects or uncontrolled movement of doors/gates during the installation or operation of this product.

WARNINGS FOR USERS

- Keep this manual in a safe place to be consulted whenever necessary.
- If the product has contact with fluids without being prepared, it must immediately disconnect from the power supply to avoid short circuits, and consult a specialized technician.
- Ensure that technician has provided you the product manual and informed you how to handle the product in an emergency.
- If the system requires any repair or modification, unlock the automatism, turn off the power and do not use it until all safety

SAFETY INSTRUCTIONS

conditions have been met.

- In the event of tripping of circuits breakers or fuse failure, locate the malfunction and solve it before resetting the circuit breaker or replacing the fuse. If the malfunction is not repairable by consult this manual, contact a technician.
- Keep the operation area of the motorized gate free while the gate in in motion, and do not create strength to the gate movement.
- Do not perform any operation on mechanical elements or hinges if the product is in motion.

RESPONSABILITY

- Supplier disclaims any liability if:
 - Product failure or deformation result from improper installation use or maintenance!
 - Safety norms are not followed in the installation, use and maintenance of the product.
 - Instructions in this manual are not followed.
 - Damaged is caused by unauthorized modifications
 - In these cases, the warranty is voided.

MOTORLINE ELECTROCELOS SA.

Travessa do Sobreiro, nº29
4755-474 Rio Côvo (Santa Eugénia)
Barcelos, Portugal

SYMBOLS LEGEND:



• Important safety notices



• Potentiometer information



• Useful information



• Connectors information



• Programming information



• Buttons information

THE DEVICE

TECHNICAL CHARACTERISTICS

M200 allows to **control remotely** doors, gates and parking systems. In addition, it is possible to **commute equipments that requires turning your system on or off at distance**, such as alarms, heat pumps and/or air conditioners.

All settings can be made via SMS or Bluetooth, which also allows to operate the outputs. In addition, communication via phone call with M200, which can be used to give opening or closing orders, is carried out for **FREE**, as the communicator rejects the call and executes the given order.

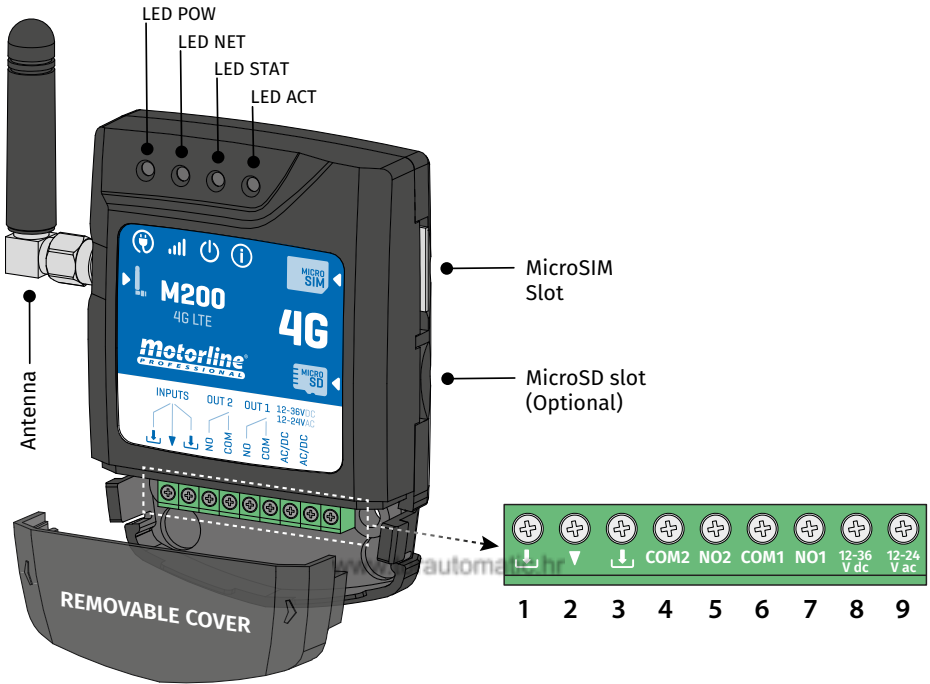
Main features:

- Capacity up to 1000 users;
- Possibility to define up to 8 routines/day with option of time interval;
- Routine exception days can be defined (e.g.: holidays, vacations, etc);
- Create users with restriction by time interval (hours/days/weeks) up to 90 days max;
- Possibility to set user permission start day;
- Communicator for alarm, to make a call and/or SMS when the alarm is triggered;
- Two inputs with the possibility of sending feedback via SMS;
- Two relay outputs with the possibility of operating separately, to control automations;
- Check microSIM card balance;
- Definition of 3 types of user (owner, administrator and guest);
- Possibility of using a memory card to register all activity in the last 12 months;
- Use of batteries to keep time in case of power failure.

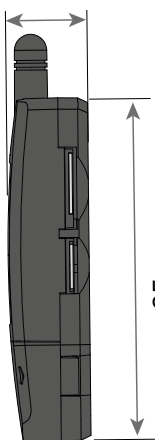
• Power supply	12-24Vac or 12-36Vdc
• Consumption	200mA in stand-by (2A when command is received)
• Max. commute capacity	1A at 60Vdc
• Operating temperature	-20° C ~ +55° C
• SIM Card	microSIM (not included)
• SD Card	microSD (not included)
• Battery	CR1225 battery - 3v - 48 mah
4G LTE/GSM	
• M200 frequencies (Europe)	Quad-band 850/900/1800/1900MHz LTE-FDD B1/B3/B5/B7/B8/ B20/B28
• M200-LA frequencies (Latin America)	850/900/1800/1900 GSM GSM: B2/B3/B5/B8 LTE: B2/B3/B4/B5/B7/B8/ B28/B66
• Transmission power	GSM850/EGSM900: Class 4 (33 dBm ±2 dB) DCS1800/PCS1900: Class 1 (30 dBm ±2 dB) LTE-FDD: Class 3 (23 dBm ±2 dB)
• Max capacity of users	1000 contacts
• 4G RF Power (max)	33.28 dBm
BLUETOOTH	
• Bluetooth version	5.0
• Frequency range	2402 – 2480 MHz
• RF Power Bluetooth	5.37 dBm
• Communication distance	<30m

THE DEVICE

VISUAL APPEARANCE

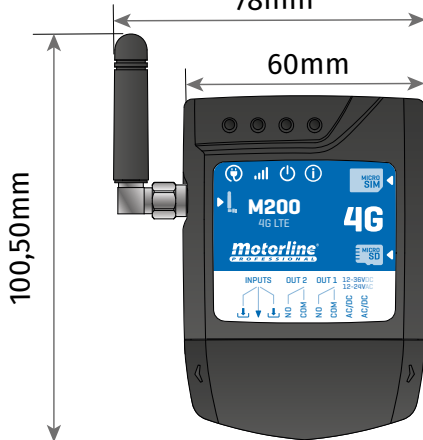


20mm



78mm

60mm



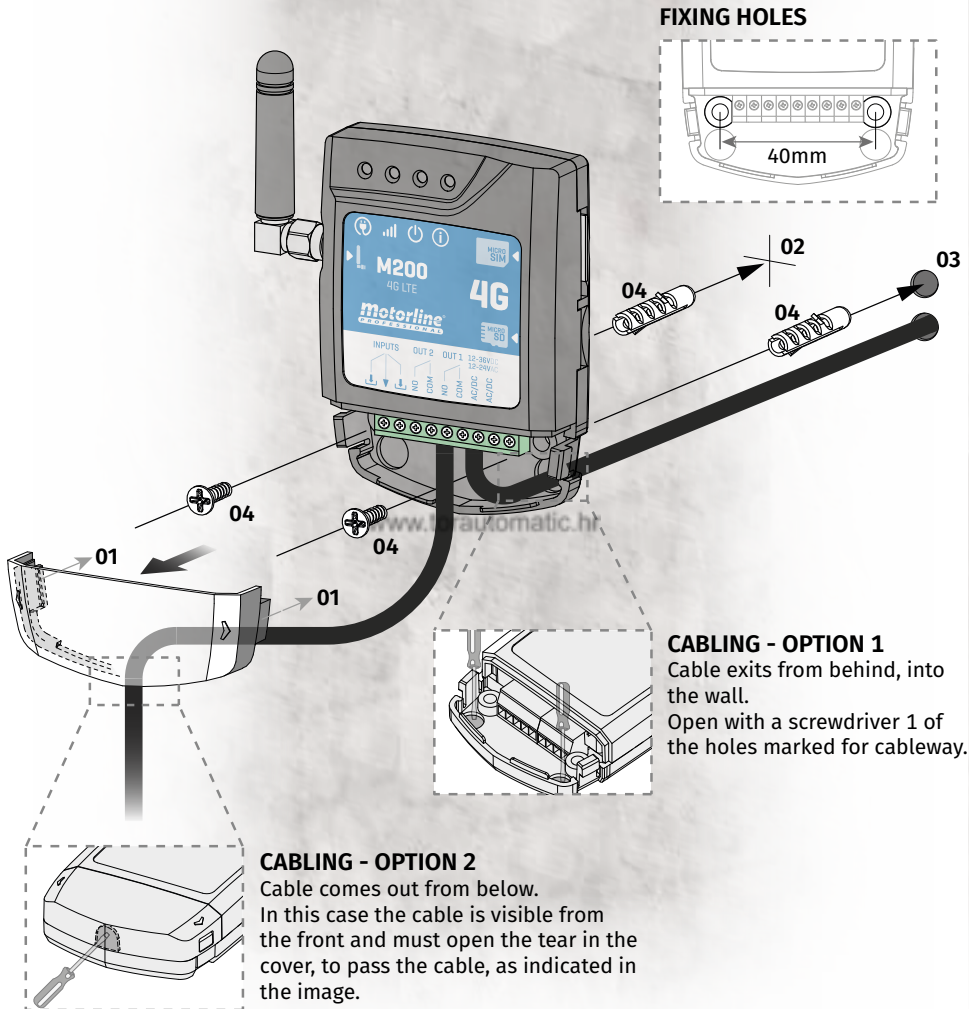
THE DEVICE

VISUAL APPEARANCE

🔌 LED POW			
Off		No power	
On		With power	
📶 LED NET			
Blinks at 2 sec intervals		Looking for network	
Blinks at 0.5 sec intervals		Registered on the network	
Blinks at 0.1 sec intervals		Transferring data	
Always on		Incoming call	
🔌 LED STAT			
Off		The module is inactive	
On		The module is active and working	
ℹ️ LED ACT			
M200 starting	On	No pause	When M200 is trying to register to the network
			When M200 has no microSIM card inserted
	Blinks 4 times	1 sec. pause	In setup for 30 sec.
	Blinks 2 times		In Reset Mode for 1 min.
M200 in operation	Blinks 1 time	1 sec. pause	Not connected to the Cloud
	Blinks 1 time	2 sec. pause	Excellent network signal
	Blinks 2 times		Good network signal
	Blinks 3 times		Weak network signal
	Blinks 4 times		Very Weak Network Signal
CONNECTORS	Nº	CONNECTION	DESCRIPTION
INPUTS	1	↓	Input 2
	2	▼	Common
	3	↓	Input 1
OUT2	4	COM2	Common Relay 2
	5	NO2	Output Relay 2 NO
OUT1	6	COM1	Common Relay 1
	7	NO1	Output Relay 1 NO
POWER SUPPLY	8	12-36 Vdc	Power input
	9	12-24 Vac	

INSTALLATION

WIRING AND FIXING



FIXATION

- 1 • Remove the cover of the machine by pulling on the side hooks.
- 2 • Mark the 2 fixing holes.
- 3 • Drill the holes.
- 4 • Attach the equipment using appropriate bushings and screws.

INSTALLATION

IMPORTANT NOTES



- The device initialization process should last approximately 30 seconds.
 - The MicroSIM card must have balance during initial setup if you want to configure via SMS. Otherwise the device cannot send feedback notifications.
 - **To keep the MicroSIM card active, the device automatically sends itself an SMS every 2 months.***
- *This operation may incur costs. For more information, check your service provider.**

CONNECTIONS



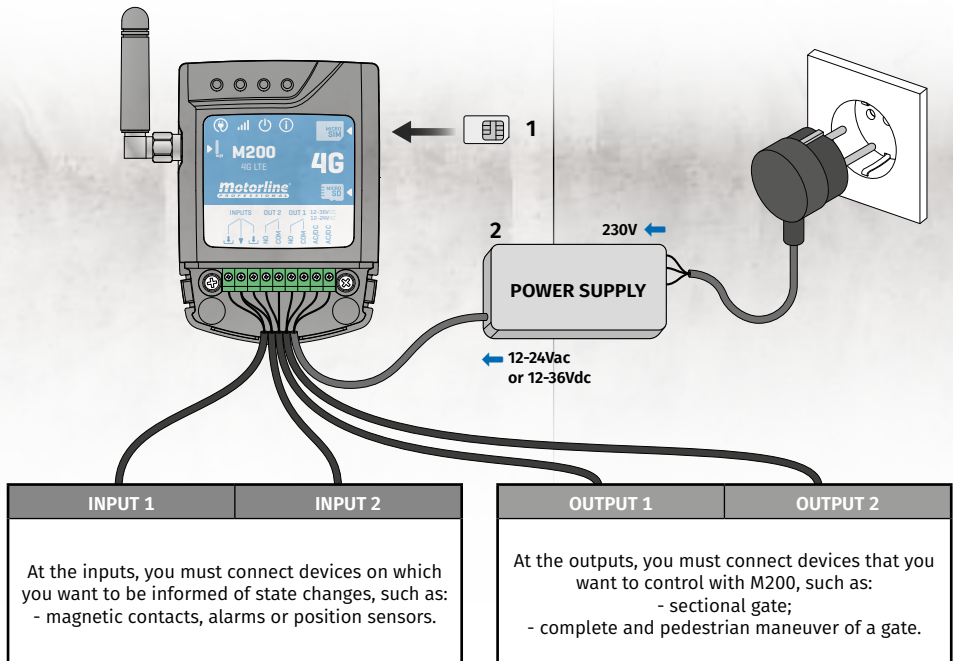
1 • For the M200 to work, it is necessary in the first configuration to insert the MicroSIM card in the slot before making the connections.

2 • Connect the device's outputs and inputs to the desired devices.

3 • Connect the device to a power supply, and POW, ACT and STAT LEDs will turn on.

4 • When the ACT LED starts blinking and the NET LED indicates the connection to the 4G LTE/GSM network, you can start programming the device.

www.torautomatic.hr



PRE-CONFIGURATION

PERMISSION LEVELS

On M200 there are **3 types of users: owner, administrator and guest**. For security reasons, guests and administrators can only connect via Bluetooth to one device only. Check the table below for per-user permissions:

PERMISSIONS	OWNER	ADMINISTRATOR	GUEST
Actuate the relay outputs	✓	✓	✓
Change your own password	✓	✓	✓
Check the status of inputs and outputs	✓	✓	✓
Limitations on the actuation of the relays (can be during an interval of hours, days of the week, interval of days and/or restriction to one of the relays)			✓
Block SMS feedback	✓		
Check and change relay settings	✓	✓	
Edit and delete any user	✓		
Edit and delete Visitors	✓	✓	
Check the network signal	✓	✓	
Check SIM card balance	✓		
Check history	✓		
Configure routines	✓		
Configure feedback/alarm	✓		
Configure M200 settings	✓		
Registration on the Motorline Portal	✓		
Default password	(set by owner)	999999	888888

CONFIGURATION BY BLUETOOTH

PERMISSION LEVELS

If you haven't downloaded **M200** application yet, you can download it using the QR Code below.



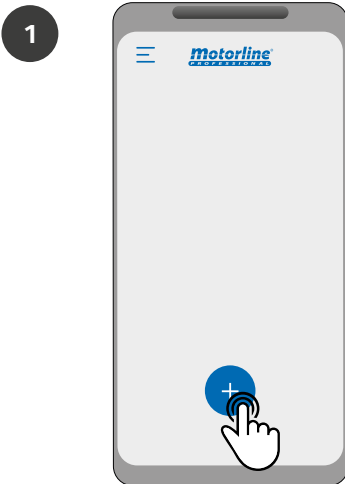
Download on the
App Store

EXPLORE IT ON
AppGallery

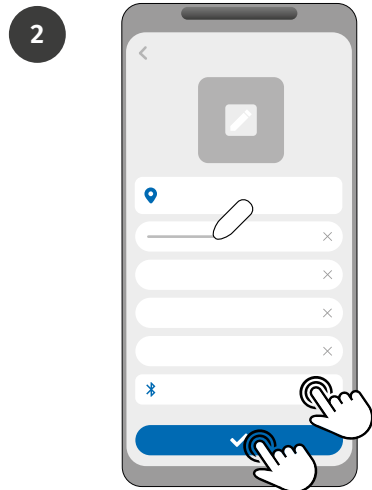
GET IT ON
Google Play

Once the **M200**, app is installed, turn on **Bluetooth** and open the app.

www.torautomatic.hr



Press the "+" button.

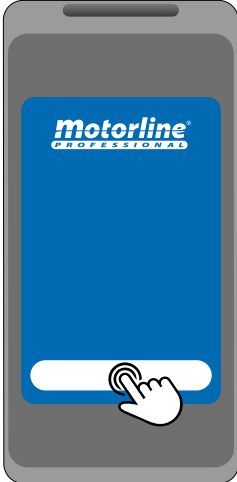


Fill in the fields, click on "Search MOTORLINE M200", select the device and then click on "save".

CONFIGURATION BY BLUETOOTH

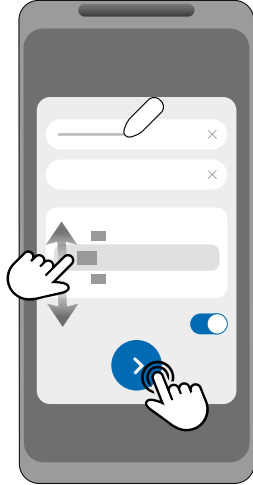
PERMISSION LEVELS

3



Press the "Start" button.

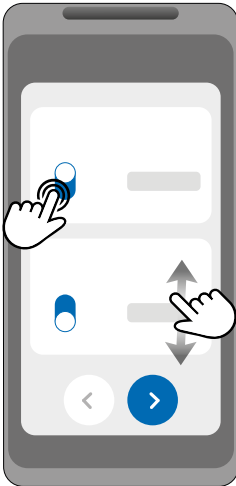
4



Fill in the fields according to the required information.

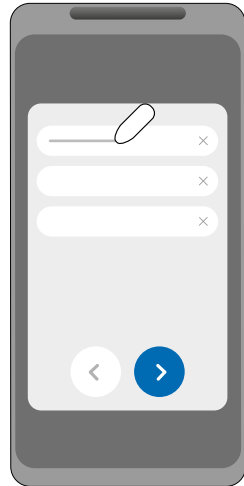
www.torautomatic.hr

5



Choose the operating mode for each relay.

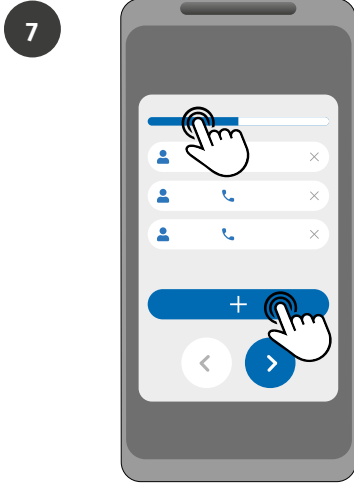
6



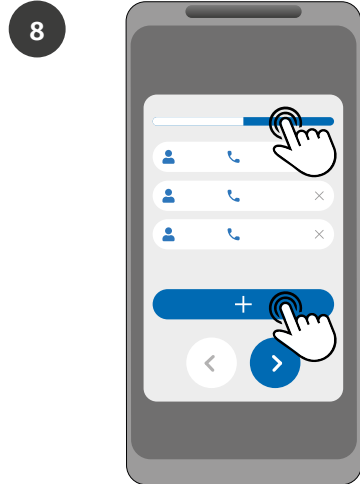
Fill in the fields according to the owner's information.

CONFIGURATION BY BLUETOOTH

PERMISSION LEVELS

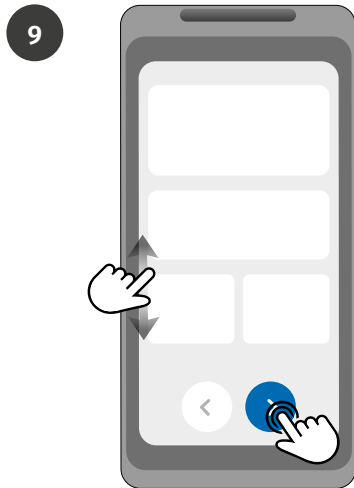


(Optional) Press the "+" button to add administrators.



(Optional) Press the "+" button to add guests and then the "Access management" button to set access restrictions if necessary.

www.torautomatic.hr



Check all configuration information and press "Finish" button to proceed.



Wait until the configuration completes.

CONFIGURATION BY SMS

PERMISSION LEVELS

If you wish to configure via SMS, you will need to send text messages to the microSIM card number on the device, with the characters corresponding to the function you want to change. Between the values, you must add dots (.) or spaces according to the examples presented.

Quick setup steps:

STEP	FUNCTION	MESSAGE	EXAMPLE
1.	Add Owner*	ME.S.O (Number).(Owner name).(Password)	ME.S.O 912345678. Andre.123456
2.	Add Administrator*	(Owner number) (Password) ME.S.A Number.Name <i>Name: max. 20 characters</i>	9xxxxxxx 123456 ME.S.A 9xxxxxxx.Ze
3.	Add Guest*	(Owner number) (Password) UR.S.U Number.Name <i>Name: max. 20 characters</i>	9xxxxxxx 123456 UR.S.U 9xxxxxxx.Ze
4.	Unblock SMS feedback	(Owner number) (Password) ME.R.F	9xxxxxxx 123456 ME.R.F
5.	Block SMS feedback	(Owner number) (Password) ME.S.F	9xxxxxxx 123456 ME.S.F



www.torautomatic.hr

- Commands can be sent in both uppercase and lowercase letters.
- To receive feedback from M200 to commands sent via SMS, add the '?' character at the end of each command.

EXAMPLE OF MESSAGE FORMAT

ME.S.O 912345678.Andre.123456?

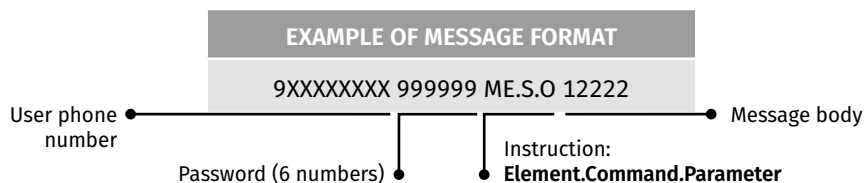
- In case of fail to ask for feedback, you will receive an error message.
- Attention:** This operation may incur costs associated with the microSIM card, depending on the contract established with the operator.

FACTORY DEFAULT SETTINGS

FUNCTION	FACTORY VALUE
Relay impulse type 1	Monostable
Relay impulse type 2	Monostable
Relay 1 time	1 sec.
Relay 2 time	1 sec.
Mode of operation	Bluetooth, SMS and Call
SMS feedback blocking	Activated

CONFIGURATION BY SMS

SMS FUNCTIONS



RELAY 1 - SETTINGS		
FUNCTION	MESSAGE	EXAMPLE
Check status	(Number) (Password) R1.G.R	9xxxxxxx 123456 R1.G.R
Enable	(Number) (Password) R1.S.R	9xxxxxxx 123456 R1.S.R
Disable	(Number) (Password) R1.R.R	9xxxxxxx 123456 R1.R.R
Check type of impulse	(Number) (Password) R1.G.M	9xxxxxxx 123456 R1.G.M
Enable bistable impulse	(Number) (Password) R1.S.M	9xxxxxxx 123456 R1.S.M
Enable monostable impulse	(Number) (Password) R1.R.M	9xxxxxxx 123456 R1.R.M
Check pulse time	(Number) (Password) R1.G.T	9xxxxxxx 123456 R1.G.T
Set push time	(Number) (Password) R1.S.T	9xxxxxxx 123456 R1.S.T 45 (1 to 18000 sec. (5h))
Check operating mode	(Number) (Password) R1.G.B	9xxxxxxx 123456 R1.G.B
Activate call-only actuation mode	(Number) (Password) R1.S.B	9xxxxxxx 123456 R1.S.B
Enable actuation mode for Call, Bluetooth and SMS	(Number) (Password) R1.R.B	9xxxxxxx 123456 R1.R.B

RELAY 2 - SETTINGS		
FUNCTION	MESSAGE	EXAMPLE
Check status	(Number) (Password) R2.G.R	9xxxxxxx 123456 R2.G.R
Enable	(Number) (Password) R2.S.R	9xxxxxxx 123456 R2.S.R
Disable	(Number) (Password) R2.R.R	9xxxxxxx 123456 R2.R.R
Check operating mode	(Number) (Password) R2.G.M	9xxxxxxx 123456 R2.G.M
Activate call-only actuation mode	(Number) (Password) R2.S.M	9xxxxxxx 123456 R2.S.M
Enable mode for call, Bluetooth and SMS	(Number) (Password) R2.R.M	9xxxxxxx 123456 R2.R.M
Check pulse time	(Number) (Password) R2.G.T	9xxxxxxx 123456 R2.G.T
Set push time	(Number) (Password) R2.S.T	9xxxxxxx 123456 R2.S.T 45 (1 to 18000 sec. (5h))

CONFIGURATION BY SMS

SMS FUNCTIONS

CHECK INPUT STATUS		
FUNCTION	MESSAGE	EXAMPLE
Check input 1 status	(Number) (Password) I1.G.I	9xxxxxxx 123456 I1.G.I
Check input 2 status	(Number) (Password) I2.G.I	9xxxxxxx 123456 I2.G.I

OWNER SETTINGS		
FUNCTION	MESSAGE	EXAMPLE
Add owner*	ME.S.O (Number).(Owner's Name).(Password)	ME.S.O 9xxxxxxx.andre.123456
Change owner password	ME.R.K (New Password)	ME.R.K 654321
Transfer of ownership	(Number) (Password) ME.R.O (Administrator Number)	9xxxxxxx 123456 ME.R.O 9yyyyyyyy
Block SMS feedback	(Number) (Password) ME.S.F	9xxxxxxx 123456 ME.S.F
Unblock SMS feedback	(Number) (Password) ME.R.F	9xxxxxxx 123456 ME.R.F
Check M200 network signal	(Number) (Password) ME.G.Q	9xxxxxxx 123456 ME.G.Q
Check the last call made to the device	(Number) (Password) ME.G.L	9xxxxxxx 123456 ME.G.L
Check microSIM card balance	(Number) (Password) ME.G.B (Operator Code) Operator balance request code associated with the device's microSIM card. Example: Vodafone (*#100#)	9xxxxxxx 123456 ME.G.B *#100#
Reset device	See full version of the manual (page 14A)	

CONFIGURATION BY SMS

SMS FUNCTIONS

ADMINISTRATOR SETTINGS		
FUNCTION	MESSAGE	EXAMPLE
Change guest to administrator	(Number) (Password) ME.S.U (Guest number)	9xxxxxxx 123456 ME.S.U 9zzzzzzz
Change administrator to guest	(Number) (Password) ME.R.U (Administrator Number)	9xxxxxxx 123456 ME.R.U 9yyyyyyyy
Add administrator without name*	(Number) (Password) ME.S.A (Administrator Number)	9xxxxxxx 123456 ME.S.A 9yyyyyyyy
Add administrator with name*	(Number) (Password) ME.S.A (Administrator Number).(Nome) Name can contain spaces/Max. 20 characters	9xxxxxxx 123456 ME.S.A 9yyyyyyyy.John
Delete administrator	(Number) (Password) ME.R.A (Administrator Number)	9xxxxxxx 123456 ME.R.A 9yyyyyyyy
Delete all administrators	(Number) (Password) ME.R.A * (asterisk)	9xxxxxxx 123456 ME.R.A*
Change own password	(Number) (Password) UR.S.A (New Password -> 6 numbers)	9xxxxxxx 123456 UR.S.A 654321
Reset guest/administrator password	(Number) (Password) UR.R.A (User number)	9xxxxxxx 123456 UR.R.A 9yyyyyyyy

VISITOR SETTINGS		
FUNCTION	MESSAGE	EXAMPLE
Disable guest days limit	(Number) (Password) UR.R.L (Guest number)	9xxxxxxx 123456 UR.R.L 9zzzzzzz
Check guest entry/exit times	(Number) (Password) UR.G.H (Guest number)	9xxxxxxx 123456 UR.G.H 9zzzzzzz
Set guest entry/exit times	(Number) (Password) UR.S.H (Guest number).(Check-in time and Check-out time) Time format HHMM -> 12:25PM is 1225 00002359 -> No time restriction	9xxxxxxx 123456 UR.S.H 9zzzzzzz.00002359
Check guest days	(Number) (Password) UR.G.W (Guest number)	9xxxxxxx 123456 UR.G.W 9zzzzzzz

CONFIGURATION BY SMS

SMS FUNCTIONS

VISITOR SETTINGS																
FUNCTION	MESSAGE	EXAMPLE														
Set guest days	(Number) (Password) UR.S.W (Guest number).(Days -> 1 or 0) Days -> Sun. Mon. ... Fri. Sat.	9xxxxxxxx 123456 UR.S.W 9zzzzzzz.1101001 <table border="1"> <tr> <th>Sun.</th> <th>Mon.</th> <th>Tue.</th> <th>Wed.</th> <th>Thu.</th> <th>Fri.</th> <th>Sat.</th> </tr> <tr> <td>1</td> <td>1</td> <td>0</td> <td>1</td> <td>0</td> <td>0</td> <td>1</td> </tr> </table>	Sun.	Mon.	Tue.	Wed.	Thu.	Fri.	Sat.	1	1	0	1	0	0	1
Sun.	Mon.	Tue.	Wed.	Thu.	Fri.	Sat.										
1	1	0	1	0	0	1										
Check guest relay restrictions	(Number) (Password) UR.G.R (Guest number)	9xxxxxxxx 123456 UR.G.R 9zzzzzzzz														
Set guest relay restriction	(Number) (Password) UR.S.R (Guest number).(Relay) '0' -> No relay restriction	9xxxxxxxx 123456 UR.S.R 9zzzzzzzz.2														

USER CONFIGURATION																														
FUNCTION	MESSAGE	EXAMPLE																												
Check Guest / Administrator / Owner	(Number) (Password) UR.G.U (User number)	9xxxxxxxx 123456 UR.G.U 9uuuuuuuu																												
Add Guest with no name and no restrictions*	(Number) (Password) UR.S.U (Guest number)	9xxxxxxxx 123456 UR.S.U 9zzzzzzzz																												
Add Guest with name and without restrictions*	(Number) (Password) UR.S.U (Guest number).(Name) Name may contain spaces/Max. 20 characters	9xxxxxxxx 123456 UR.S.U 9zzzzzzzz.Jorge																												
Add Restricted Guest*	(Number) (Password) UR.S.U (Guest number).(Name).(Check-in time and Check-out time).(Start date).(Days).(Number of days of access).(Relay restriction). (User continuity) Name may contain spaces/Max. 20 characters Time format HHMM -> 12:25PM is 1225 '00002359' -> No time restriction Start date -> YYMMDD '*' -> No start date Days -> Sun. Mon. ... Fri. Sat (0, 1) '*' -> No day limit Relay restriction -> '0' - no relay restriction / '1' - restriction to relay 1 / '2' - restriction to relay 2 User continuity (0, 1) -> 0 to do not delete user after deadline / 1 to delete user after deadline	9xxxxxxxx 123456 UR.S.U 9zzzzzzzz.Jorge. 09451530.220915.1101001.13.1.0 <table border="1"> <tr> <td colspan="7">From 09h45min. to 15h30min.</td> </tr> <tr> <td>0</td> <td>9</td> <td>4</td> <td>5</td> <td>1</td> <td>5</td> <td>3 0</td> </tr> </table> <table border="1"> <tr> <th>Sun.</th> <th>Mon.</th> <th>Tue.</th> <th>Wed.</th> <th>Thu.</th> <th>Fri.</th> <th>Sat.</th> </tr> <tr> <td>1</td> <td>1</td> <td>0</td> <td>1</td> <td>0</td> <td>0</td> <td>1</td> </tr> </table>	From 09h45min. to 15h30min.							0	9	4	5	1	5	3 0	Sun.	Mon.	Tue.	Wed.	Thu.	Fri.	Sat.	1	1	0	1	0	0	1
From 09h45min. to 15h30min.																														
0	9	4	5	1	5	3 0																								
Sun.	Mon.	Tue.	Wed.	Thu.	Fri.	Sat.																								
1	1	0	1	0	0	1																								

CONFIGURATION BY SMS

SMS FUNCTIONS

USER CONFIGURATION		
FUNCTION	MESSAGE	EXAMPLE
Delete all Guests	(Number) (Password) UR.R.*	9xxxxxxxx 123456 UR.R.*
Delete Guest	(Number) (Password) UR.R.U (Guest number)	9xxxxxxxx 123456 UR.R.U 9zzzzzzzz
Set Guest/ Administrator/ Owner name	(Number) (Password) UR.S.N (User number).(Name) Name may contain spaces/Max. 20 characters	9xxxxxxxx 123456 UR.S.N 9uuuuuuuu.Jorge
Check Guest start date	(Number) (Password) UR.G.D (Guest number)	9xxxxxxxx 123456 UR.G.D 9zzzzzzzz
Edit Guest start date	(Number) (Password) UR.S.D (Guest number).(Start date -> YYMMDD)	9xxxxxxxx 123456 UR.S.D 9zzzzzzzz.220915
Check Guest days limit	(Number) (Password) UR.G.L (Guest number)	9xxxxxxxx 123456 UR.G.L 9zzzzzzzz
Enable and set Guest days limit	(Number) (Password) UR.S.L (Guest number).(Days limit)	9xxxxxxxx 123456 UR.S.L 9zzzzzzzz.15



*** Attention:** Manually enter the phone number to avoid entering unwanted invisible characters.

OWNER SETTINGS

ADD OWNER



It is **mandatory** to have an owner, not allowing the operation of the M200 if not added. The owner has access to all M200 functionality.

ME.S.O (Number).(Owner name).(Password)



ME.S.O 9xxxxxxxx.ANDRE.123456

Functionality only authorized when the M200 does not yet have an owner.

CHANGE OWNER PASSWORD



Allows you to change the password if you forget it.

ME.R.K (New Password)



ME.R.K 654321

TRANSFER OF OWNER



Allows the owner to exchange permissions with an administrator.

(Number) (Password) ME.R.O (Admin number)



9xxxxxxxx 123456 ME.R.O 9aaaaaaaa

Requires owner permission.

Only administrators can be changed to new owner and old owner is changed to administrator.
By SMS you can send a "?" at the end of the message to receive feedback response.

BLOCK/UNBLOCK SMS RESPONSES



Allows you to block/unblock SMS responses from the M200 to all administrators and visitors. **Default:** Blocked

1. Block SMS responses
2. Unblock SMS responses

1. (Number) (Password) ME.S.F



9xxxxxxxx 123456 ME.S.F

2. (Number) (Password) ME.R.F



9xxxxxxxx 123456 ME.R.F

Requires owner permission.

By SMS you can send a "?" at the end of the message to receive feedback response.

OWNER SETTINGS

EDIT OWNER NAME



Allows you to change the name of an owner.
The name can contain spaces/max. 20 characters.

(Number) (Password) UR.S.N (Owner number).(Name) → 9xxxxxxx 123456 UR.S.N 9uuuuuuuu.HELDER

Only the owner can change his name.
By SMS you can send a "?" at the end of the message to receive feedback response.

NEW VISITOR/ADMINISTRATOR MOBILE DEVICE



For security reasons, when operating via Bluetooth, each visitor/administrator is limited to the first device they connect with.
With this feature, the owner will be able to grant a new authorization so that this user can connect to bluetooth with a device different from the previous connection (e.g. Lost mobile phone).

(Number) (Password) UR.R.B (Owner number) → 9xxxxxxx 123456 UR.R.B 9uuuuuuuu

Requires owner permission.
By SMS you can send a "?" at the end of the message to receive feedback response.

ADMINISTRATOR SETTINGS

CHANGE VISITOR TO ADMINISTRATOR



Changes a visitor's permission to administrator.

(Number) (Password) ME.S.U (Guest number) → 9xxxxxxxx 123456 ME.S.U 9aaaaaaaa

Requires owner permission.
By SMS you can send a "?" at the end of the message to receive feedback response.

CHANGE ADMINISTRATOR TO VISITOR



Changes permission from an administrator to visitor.

(Number) (Password) ME.R.U (Admin number) → 9xxxxxxxx 123456 ME.R.U 9aaaaaaaa

Requires owner permission.
By SMS you can send a "?" at the end of the message to receive feedback response.

ADD ADMINISTRATOR WITH JUST THE NUMBER



When adding an administrator with only the number, this will be configured without a name.

(Number) (Password) ME.S.A (Admin number) → 9xxxxxxxx 123456 ME.S.A 9aaaaaaaa

The default password is: **999999**
Requires owner permission.
By SMS you can send a "?" at the end of the message to receive feedback response.

ADD ADMINISTRATOR WITH JUST THE NUMBER AND NAME



When adding an administrator, it will be configured with a name.

(Number) (Password) ME.S.A (Admin number),(Name) → 9xxxxxxxx 123456 ME.S.A 9aaaaaaaa.BEATRIZ

The default password is: **999999**
Requires owner permission.
By SMS you can send a "?" at the end of the message to receive feedback response.

DELETE ADMINISTRATOR



Requires owner permission.

(Number) (Password) ME.R.A (Admin number) → 9xxxxxxxx 123456 ME.R.A 9aaaaaaaa.ISABEL

Requires owner permission.
By SMS you can send a "?" at the end of the message to receive feedback response.

ADMINISTRATOR SETTINGS

DELETE ALL ADMINISTRATORS



This feature allows the owner to delete all administrators from the system.

(Number) (Password) ME.R.A * (asterisk) → 9xxxxxxxx 123456 ME.R.A *

Requires owner permission.

By SMS you can send a "?" at the end of the message to receive feedback response.

CHANGE PASSWORD



For security reasons, it is recommended that all administrators change the default password to a personal password.

(Number) (Password) UR.S.A (New Password -> 6 numbers) → 9xxxxxxxx 123456 UR.S.A 777777

Not available to the owner.

Only the user himself can change his password.

By SMS you can send a "?" at the end of the message to receive feedback response.

RESET PASSWORD

www.torautomatic.hr



In case an administrator forgets his password, it is possible to reset to default passwords.

(Number) (Password) UR.R.A (Admin number) → 9xxxxxxxx 123456 UR.R.A 9uuuuuuuu

The default password is: **999999**

Requires owner permission.

By SMS you can send a "?" at the end of the message to receive feedback response.

EDIT ADMINISTRATOR NAME



Allows you to change the name of an administrator.
The name can contain spaces/max. 20 characters.

(Number) (Password) UR.S.N (Admin number),(Name) → 9xxxxxxxx 123456 UR.S.N 9uuuuuuuu.JOAO

Requires owner permission.

By SMS you can send a "?" at the end of the message to receive feedback response.

VISITORS SETTINGS

ADD VISITOR WITH JUST THE NUMBER

SMS

When adding a visitor with just the number, it will be configured without name and without access management. **Default:** user without name

- Number (max. 15 digits)

(No access limitations)

(Number) (Password) UR.S.U (Guest number) → 9xxxxxxx 123456 UR.S.U 9uuuuuuuu

The default password is: **888888**

Requires administrator or owner permission.

By SMS you can send a "?" at the end of the message to receive feedback response.

ADD VISITOR WITH JUST THE NUMBER AND NAME



When adding a visitor with just the number and name, it will be configured with a chosen name and without access management.

- Number (max. 15 digits)

- Name (max. 20 characters)

(No access limitations)

(Number) (Password) UR.S.U (Guest number).(Name) → 9xxxxxxx 123456 UR.S.U 9uuuuuuuu.Jorge

The default password is: **888888**

Requires administrator or owner permission.

By SMS you can send a "?" at the end of the message to receive feedback response.

ADD VISITOR WITH ACCESS MANAGEMENT



We want to add a user with the following access management:

(For detailed information on inputs 6 to 11 see page 29)

1 - Number (max. 15 digits)

2 - Password (6 numbers)

3 - Instruction

4 - Visitor number to be added (max. 15 digits)

5 - Name (max. 20 characters)

6 - Time of Entry and Time of Exit

7 - Start date

8 - Limitation by Days of the Week

9 - Duration of days

10 - Relay Restriction

11 - Elimination at the end of the Duration

1	2	3	4	5	6	7	8	9	10	11
9xxxxxxx	123456	UR.S.U	9uuuuuuuu	MATILDE	08301800	220618	0111110	42	1	0

(Number) (Password) UR.S.U (Guest number).(Name).(Time of Entry and Time of Exit).(Start Date).(Duration of days).(Relay Restriction).(Elimination at the end of the Duration)

The default password is: **888888**

Requires administrator or owner permission.


By SMS you can send a "?" at the end of the message to receive feedback response.

VISITORS SETTINGS

ADD VISITOR WITH ACCESS MANAGEMENT

SMS

6 - Time of Entry and Time of Exit: Interval of hours between which a visitor is allowed to actuate relay outputs. When adding visitor or editing hours limitation, time submission format is:

HHMMHHMM	Entry hour and minutes followed by Exit hour and minutes
EX: 08301800	From 8:30 am to 6:00 pm
 If you want access to the full day, enter 00002359.	

7 - Start date: Date from which the visitor is allowed to actuate the relay outputs. When adding visitor or editing start date, the date submission format is:

YYMMDD	Year (YY) followed by Month (MM) and Day (DD)
EX: 231101	2023/11/01

8 - Limitation by Days of the Week: Days of the week when the visitor is allowed to actuate the relay outputs. When adding a visitor or editing Days of the Week, **the week starts on Sunday** and enter **Zero (0) for the days you wish to limit**, enter **One (1) for the days you do not wish to limit**.

EX: 1101001	<table><tr><td>Sun.</td><td>Mon.</td><td>Tue.</td><td>Wed.</td><td>Thu.</td><td>Fri.</td><td>Sat.</td></tr><tr><td>1</td><td>1</td><td>0</td><td>1</td><td>0</td><td>0</td><td>1</td></tr></table>	Sun.	Mon.	Tue.	Wed.	Thu.	Fri.	Sat.	1	1	0	1	0	0	1
Sun.	Mon.	Tue.	Wed.	Thu.	Fri.	Sat.									
1	1	0	1	0	0	1									

9 - Duration of days: Number of days from the Start Date that the visitor is allowed to actuate the relay outputs. It has a **maximum of 90** days after the Start Date. You can also put * (asterisk) instead of the number if you want it to have unlimited time.

10 - Relay Restriction: If you want a visitor not to have access to the operation of one of the M200 relays, you can define when adding a visitor or editing Relay Restriction, having to send **Zero (0), One (1) or Two (2):**

0	No restriction on relays
1	With Relay 1 Restriction
2	With Relay 2 Restriction
EX: 9xxxxxxxxx 123456 UR.S.U 9uuuuuuuu.MARCO.08301800.220618.0111110.30.1.0?	

11 - Elimination at the end: Whenever this function is activated at the end of the duration, the visitor will be deleted from the M200. To activate this function, you need to enter One (1) or Zero (0).

1	Delete after last day of permission
0	Do not delete after last day of permission

VISITORS SETTINGS

DISABLE VISITOR DAYS LIMIT



This instruction grants the visitor unlimited days permission to activate the relay.

(Number) (Password) UR.R.L (Guest number) → 9xxxxxxx 123456 UR.R.L 9uuuuuuuu

Requires administrator or owner permission.
By SMS you can send a "?" at the end of the message to receive feedback response.

EDIT VISITOR ENTRY AND EXIT TIMES



Interval of hours between which a visitor is allowed to actuate relay outputs. When adding visitor or editing hours limitation, time submission format is:

**(Number) (Password) UR.S.H (Guest number),(Entry Time and Exit Time -> HHMMHHMM)
→ 9xxxxxxx 123456 UR.S.H 9uuuuuuuu.07451915**

Requires administrator or owner permission.
By SMS you can send a "?" at the end of the message to receive feedback response.

HHMMHHMM

Entry hour and minutes followed by Exit hour and minutes

EX: 08301800

www.torautomatic.hr

From 8:30 am to 6:00 pm

⚠ If you want access to the full day, enter 00002359.

DELETE ALL VISITORS



(Number) (Password) UR.R.* → 9xxxxxxx 123456 UR.R.*

Requires administrator or owner permission.
By SMS you can send a "?" at the end of the message to receive feedback response.

DELETE VISITOR



Changes permission from an administrator to visitor.

(Number) (Password) UR.R.U (Guest number) → 9xxxxxxx 123456 UR.R.U 9uuuuuuuu

Requires administrator or owner permission.
By SMS you can send a "?" at the end of the message to receive feedback response.

VISITORS SETTINGS

EDIT VISITOR NAME



Allows you to change a visitor's name.

(Number) (Password) UR.S.N (Guest number).(Name) → 9xxxxxxx 123456 UR.S.N 9uuuuuuuu.PEDRO

Requires administrator or owner permission.
By SMS you can send a "?" at the end of the message to receive feedback response.

EDIT VISITOR START DATE



Date from which the visitor is allowed to actuate the relay outputs.

(Number) (Password) UR.S.D (Guest number).(Start date -> YYMMDD)
→ 9xxxxxxx 123456 UR.S.N 9uuuuuuuu.TIAGO

Requires administrator or owner permission.
By SMS you can send a "?" at the end of the message to receive feedback response.

YYMMDD

Year (YY) followed by Month (MM) and Day (DD)

EX: 231101

www.torautomatica.com 2023/11/01

ACTIVATE AND SET VISITOR DAYS LIMIT



Number of days from the Start Date that the visitor is allowed to actuate the relay outputs. There is a **maximum of 90 days** after the Start Date.

Default: No days limit → You can also put * (asterisk) instead of the number.

(Number) (Password) UR.S.L (Guest Number).(Nº of days) → 9xxxxxxx 123456 UR.S.L 9uuuuuuuu.45

Requires administrator or owner permission.
By SMS you can send a "?" at the end of the message to receive feedback response.

CHANGE PASSWORD



For security reasons, it is recommended that all administrators change the default password to a personal password.

(Number) (Password) UR.S.A (New Password -> 6 numbers) → 9xxxxxxx 123456 UR.S.A 777777

Not available to the owner.
Only the user himself can change his password.
By SMS you can send a "?" at the end of the message to receive feedback response.

CHECK M200 INFORMATION

CHECK USER



Lets you check information about an M200 user.

1 • Visitor

• By SMS the Visitor query is received as follows:

- 1) Name
- 2) Number
- 3) Permission level
- 4) Start Date - Exit Date
- 5) Entry time
- 6) Days of the week
- 7) Relay restriction


2 • Administrator/Owner

• By SMS the Administrator/Owner query is received as follows:

- 1) Name
- 2) Number
- 3) Permission level

(Number) (Password) UR.G.U (Guest Number) → 9xxxxxxxx 123456 UR.G.U 9uuuuuuuu

Requires administrator or owner permission.
By SMS you can send a "?" at the end of the message to receive feedback response.

 Administrators will only have access to their own information and visitors.

CHECK A VISITOR'S HOURS



This feature allows you to view the entry time and exit time of the visitor.

(Number) (Password) UR.G.H (Guest Number) → 9xxxxxxxx 123456 UR.G.H 9uuuuuuuu

Requires administrator or owner permission.

CHECK LIMITATION BY DAYS OF THE WEEK



This feature allows you to view the days of the week that the visitor has access to.

(Number) (Password) UR.G.W (Guest Number) → 9xxxxxxxx 123456 UR.G.W 9uuuuuuuu

Requires administrator or owner permission.

CHECK M200 INFORMATION

CHECK A VISITOR'S START DATE



This feature allows you to view the visitor's start date.

(Number) (Password) UR.G.D (Guest Number) → 9xxxxxxx 123456 UR.G.D 9uuuuuuuu

Requires administrator or owner permission.

Preset: Date (year, month, day) the Visitor was added → ex: 221231

CHECK DURATION OF DAYS OF A VISITOR



This feature allows you to view the length of time that the visitor has access.

(Number) (Password) UR.G.L (Guest Number) → 9xxxxxxx 123456 UR.G.L 9uuuuuuuu

Requires administrator or owner permission.

CHECK SIM CARD 4G SIGNAL



Checks the M200 SIM card 4G signal strength. 5 power levels can be checked: Excellent; Good; Weak; Very weak; No signal.

(Number) (Password) ME.G.Q → 9xxxxxxx 123456 ME.G.Q

Requires administrator or owner permission.

CHECK LAST CALL



Check who was the last user to make a call to the M200.

(Number) (Password) ME.G.L → 9xxxxxxx 123456 ME.G.L

Requires owner permission.

HEAR ALARM SOUND



Allows the owner to receive a call to hear the alarm sound recorded in the M200.

(Number) (Password) ME.G.S → 9xxxxxxx 123456 ME.G.S

Requires owner permission.

CHECK M200 INFORMATION

CHECK MICROSIM CARD BALANCE



Check the M200 microSIM card balance. The received message is just a copy of the message received by the M200 operator, and the interaction proposed by some operators is not possible. You must enter the operator balance request message associated with the M200 microSIM card. Examples:

Vodafone → *#100#

MEO → *#123#

NOS → *#111#

(Number) (Password) ME.G.B (Operator Code) → 9xxxxxxx 123456 ME.G.B *#100#

Requires owner permission.

CHECK RELAY 1 STATUS



It allows checking the state of relay 1 output.

(Number) (Password) R1.G.R → 9xxxxxxx 123456 R1.G.R

Does not require special permissions.

CHECK RELAY 1 IMPULSE TYPE



Allows you to check whether Relay 1 is Monostable or Bistable.

(Number) (Password) R1.G.M → 9xxxxxxx 123456 R1.G.M

Requires administrator or owner permission.

CHECK RELAY 1 TIME



It allows checking the time set for the Bistable impulse of Relay 1.

(Number) (Password) R1.G.T → 9xxxxxxx 123456 R1.G.T

Requires administrator or owner permission.

CHECK RELAY 1 OPERATING MODE



It allows to check whether Relay 1 is operating via Call only or via Call, SMS and Bluetooth.

(Number) (Password) R1.G.B → 9xxxxxxx 123456 R1.G.B

Requires administrator or owner permission.

CHECK M200 INFORMATION

CHECK RELAY 2 STATUS



It allows checking the state of relay 2 output.

(Number) (Password) R2.G.R → 9xxxxxxxx 123456 R2.G.R

Does not require special permissions.

CHECK RELAY 2 IMPULSE TYPE



Allows checking if Relay 2 is in Monostable or Bistable.

(Number) (Password) R2.G.M → 9xxxxxxxx 123456 R2.G.M

Requires administrator or owner permission.

CHECK RELAY 2 TIME



It allows checking the time set for the Bistable impulse of Relay 2.

(Number) (Password) R2.G.T → 9xxxxxxxx 123456 R2.G.T

Requires administrator or owner permission.

CHECK RELAY 2 OPERATING MODE



It allows to check whether Relay 2 is operating via Call only or via Call, SMS and Bluetooth.

(Number) (Password) R2.G.B → 9xxxxxxxx 123456 R2.G.B

Requires administrator or owner permission.

CHECK INPUT 1 STATUS



Allows checking the status of Input 1.

(Number) (Password) I1.G.I → 9xxxxxxxx 123456 I1.G.I

Does not require special permissions.

CHECK INPUT 2 STATUS



Allows checking the status of Input 2.

(Number) (Password) I2.G.I → 9xxxxxxxx 123456 I2.G.I

Does not require special permissions.

RELAY 1 CONFIGURATION

ACTIVATE RELAY 1



It may be locked to work on call only. Visitors may have limitations.
(See Permission Levels on pg. 14A)

(Number) (Password) R1.S.R → 9xxxxxxxx 123456 R1.S.R

Does not require special permissions.
By SMS you can send a "?" at the end of the message to receive feedback response.

DISABLE RELAY 1



It may be locked to work on call only. Visitors may have limitations.
(See Permission Levels on pg. 14A)

(Number) (Password) R1.R.R → 9xxxxxxxx 123456 R1.R.R

Does not require special permissions.
By SMS you can send a "?" at the end of the message to receive feedback response.

CHANGE RELAY 1 TIME



Changes the timing of the Bistable impulse. **Default:** 1 sec.

(Number) (Password) R1.S.T → 9xxxxxxxx 123456 R1.S.T

Requires administrator or owner permission.
By SMS you can send a "?" at the end of the message to receive feedback response.

CHANGE RELAY 1 IMPULSE TYPE



Changes the pulse type between Monostable or Bistable. **Default:** Bistable

- Monostable → Actuators on the relay change the status to on and then to off at the end of the set time.
- Bistable → Actuators on the relay change the status between on and off.

1. Change to Bistable
2. Change to Monostable

1. (Number) (Password) R1.S.M → 9xxxxxxxx 123456 R1.S.M

2. (Number) (Password) R1.R.M → 9xxxxxxxx 123456 R1.R.M

Requires administrator or owner permission.
By SMS you can send a "?" at the end of the message to receive feedback response.

RELAY 1 CONFIGURATION

ACTIVATE ACTION MODE BY CALL ONLY



Changes the operating mode to allow Calls only or to allow Calls, SMS and Bluetooth.

1. Change to Call Only
2. Change to Call, SMS and Bluetooth

1.	(Number) (Password) R1.S.B	→	9xxxxxxxx 123456 R1.S.B
2.	(Number) (Password) R1.R.B	→	9xxxxxxxx 123456 R1.R.B
Requires administrator or owner permission. By SMS you can send a "?" at the end of the message to receive feedback response.			

www.torautomatic.hr

RELAY 2 CONFIGURATION

ACTIVATE RELAY 2



Visitors may have limitations. (See Permission Levels on pg. 14A)

(Number) (Password) R2.S.R → 9xxxxxxxx 123456 R2.S.R

Does not require special permissions.
By SMS you can send a "?" at the end of the message to receive feedback response.

DISABLE RELAY 2



Visitors may have limitations. (See Permission Levels on pg. 14A)

(Number) (Password) R2.R.R → 9xxxxxxxx 123456 R2.R.R

Does not require special permissions.
By SMS you can send a "?" at the end of the message to receive feedback response.

CHANGE RELAY 2 IMPULSE TYPE



Changes the pulse type between Monostable or Bistable. **Default:** Bistable

- Monostable → Actuators on the relay change the status between on and off.
- Bistable → Actuators on the relay change the status to on and then to off at the end of the set time.

1. Change to Bistable
2. Change to Monostable

1. (Number) (Password) R2.S.M → 9xxxxxxxx 123456 R2.S.M

2. (Number) (Password) R2.R.M → 9xxxxxxxx 123456 R2.R.M

Requires administrator or owner permission.
By SMS you can send a "?" at the end of the message to receive feedback response.

CHANGE RELAY 2 TIME



Changes the timing of the Bistable impulse. **Default:** 1 sec.

(Number) (Password) R2.S.T → 9xxxxxxxx 123456 R2.S.T

Requires administrator or owner permission.
By SMS you can send a "?" at the end of the message to receive feedback response.

M200 CONFIGURATION

CHANGE BLUETOOTH NAME



Sets a name to be displayed when searching for the M200 via Bluetooth. The name can contain spaces/max. 20 characters.

Default: MOTORLINE M200

(Number) (Password) ME.S.N (Bluetooth name) → 9xxxxxxxx 123456 ME.S.N House gate

Requires owner permission.
By SMS you can send a "?" at the end of the message to receive feedback response.

CHANGE BLUETOOTH NAME



Allows you to completely delete the microSD card data.

(Number) (Password) ME.R.M → 9xxxxxxxx 123456 ME.R.M

Requires owner permission.
By SMS you can send a "?" at the end of the message to receive feedback response.

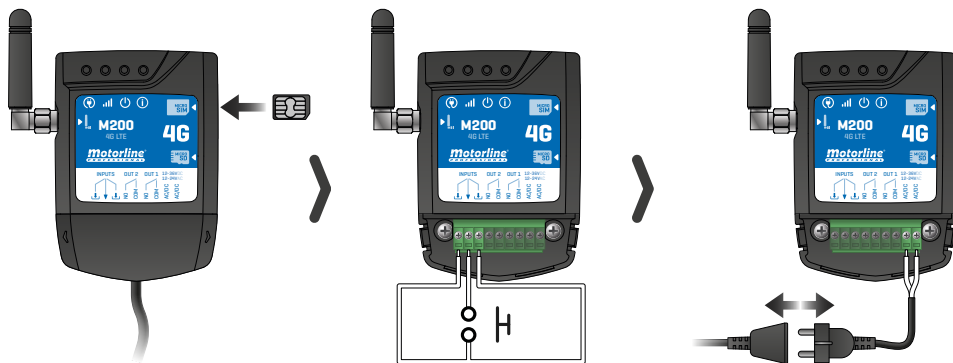
RESTORE FACTORY SETTINGS

www.torautomatic.hr



Deletes all M200 users and settings.

Procedure to carry out this operation are:



1 • Insert microSIM card (without pin);

2 • Make a shunt between IN1 and IN2 and make a connection to as shown in the image;

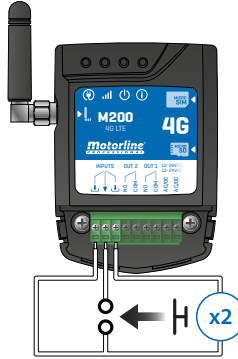
3 • Power off and on the device;

M200 CONFIGURATION

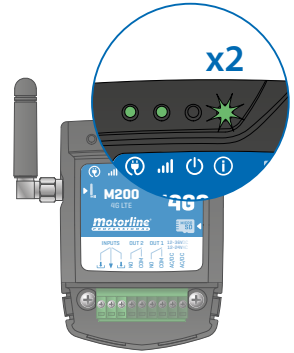
RESTORE FACTORY SETTINGS



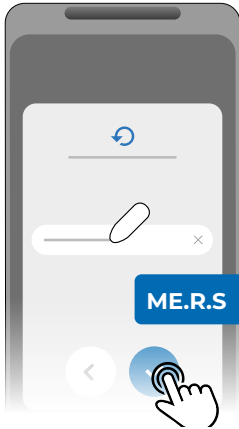
3 • Wait until the ACT LED starts flashing 4 times with 1 second interval;



4 • Give two pulses simultaneously on the two inputs IN1 IN2 and GND;



5 • Wait until the ACT LED starts flashing 2 times with 1 second interval;



6 • Then send the SMS to the M200 with the instruction:
ME.R.S

www.torautomatic.hr

M200 CONFIGURATION

SET UP DAILY ROUTINES



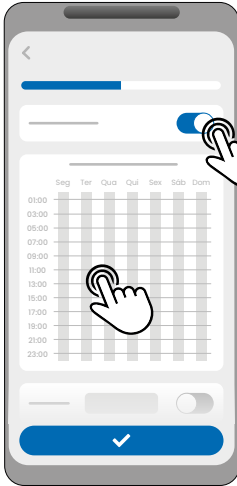
The **M200** allows you to define time to activate/deactivate the relays, for each day of the week.



Requires Owner permission.

The configuration of each routine can be done in the type of impulse (monostable or bistable) and in the time defined for each relay.

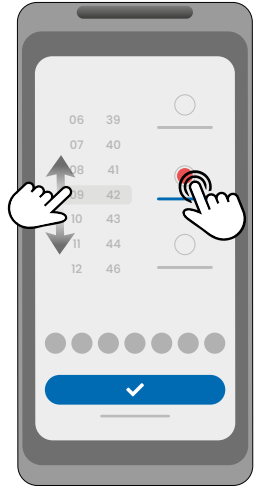
In the menu, press **"Settings"**, access the **"Program routines"** page and follow the steps below:



1 • Click "Enable Routine" and tap the table to configure a routine.



2 • Select the day you want to add the routine and click "+" to configure.



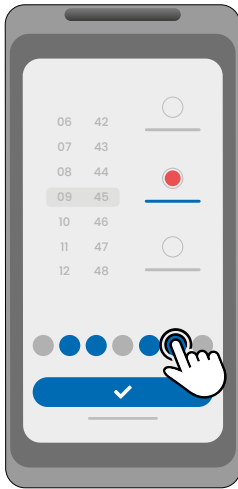
3 • Select the time and type of action to perform on the routine.



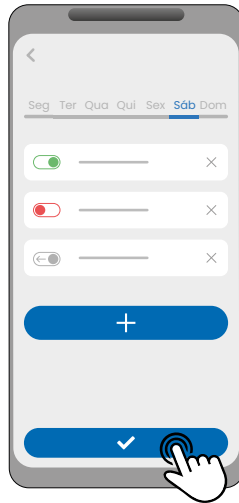
Each relay can contain up to a maximum of 8 routines for each day of the week.

M200 CONFIGURATION

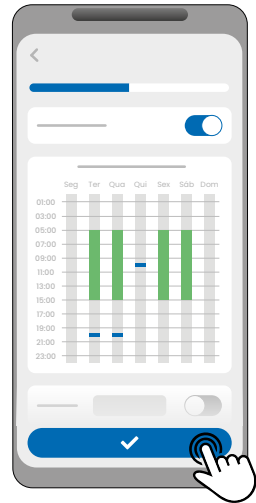
SET UP DAILY ROUTINES



4 • You can add the same routine to more days of the week.



5 • Click "Save" to save the defined Routines.
www.torautomatic.hr



6 • The table will display the settings routines for you.

TABLE COLORS	
■ (Green)	Periods of operation of the Routines
■ (Blue)	Configured impulses

DEFINE TIME INTERVALS AND EXCEPTIONS

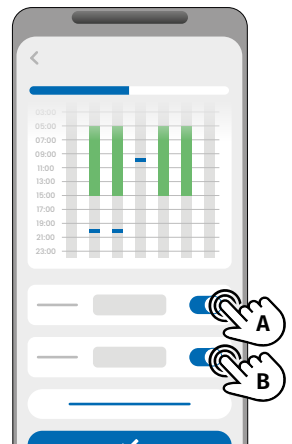
It is possible to define periods of time in which the Routines will act, or, on the contrary, they will have no effect.

A) TIME INTERVALS

You can define in the calendar, which will be the start day and the end day of the execution of the configured Routines.

B) EXCEPTIONS

You can define in the calendar, specific days in which the configured Routines will not be activated.



M200 CONFIGURATION

CONFIGURAR FEEDBACKS



The **M200** allows you to create a contact list of users who will receive SMS notifications with information on changes in the status of inputs.



Requires Owner permission.

FEEDBACK OPERATION MODES

General Mode:

When an input is activated, all contacts in the list receive a Feedback message.

Time Mode:

Relays 1 and 2 are respectively associated with inputs 1 and 2.

When one of the relays is activated, the corresponding input waits for its activation within the time defined by the owner.

When it occurs, and if the user who activated the input belongs to the contact list, the user will receive the feedback message.

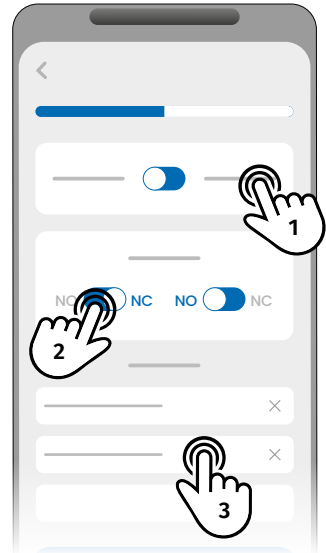
CONFIGURATION STEPS

www.torautomatic.hr

- 1 • Select the desired mode type for the feedback (General Mode or Time Mode);
- 2 • Define the status of inputs 1 and 2 (NO or NC);

INPUTS STATUS CONFIGURATION	
NO (Normally Open)	The input has no signal, and notification is sent when there is a device activation (ex: relay, button or sensor).
NC (Normally Closed)	The input has a continuous signal, and notification is sent when the signal is interrupted.

- 3 • Add the contacts of the users who will be part of the Feedback list;
- 4 • Save your changes.



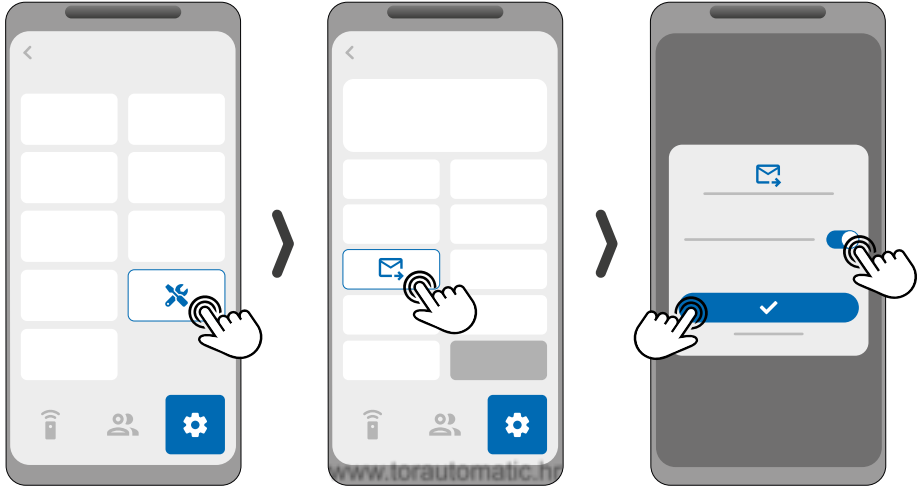
The contact list has a maximum limit of 6 users.

M200 CONFIGURATION

ACTIVATE OPERATOR SMS FORWARDING

This functionality causes the M200 to forward any SMS sent by the operator to the Device Owner.

Example: Message informing you that the balance is running out.



1 • Access the **Settings** menu and click on the "M200 Settings" button.

2. Click on the "SMS Forwarding" option.

3. Activate the function.



This functionality can be configured via Bluetooth, SMS or Motorline Portal. The SMS configuration options are as follows:

1. Activate the functionality
2. View feature status
3. Disable the feature

1.	(Number) (Password) ME.S.R	→	9xxxxxxxx 123456 ME.S.R
2.	(Number) (Password) ME.G.R	→	9xxxxxxxx 123456 ME.G.R
3.	(Number) (Password) ME.R.R	→	9xxxxxxxx 123456 ME.R.R

Requires owner permission.
By SMS you can send a "?" at the end of the message to receive feedback response.

M200 CONFIGURATION

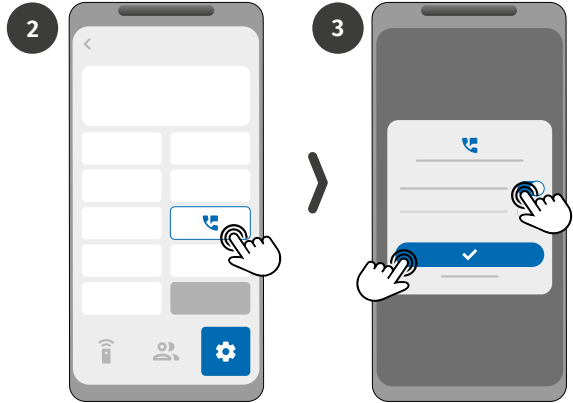
ACTIVATE RELAY 1 WITHOUT CHECKING NUMBER / DOUBLE SMS AUTHENTICATION

ACTIVATE RELAY 1 BY CALL WITHOUT NUMBER CHECK

This functionality allows relay 1 to be activated by any call that the M200 device receives, without it checking whether the contact has permissions or not.

To activate the function:

- 1 • Access the **Settings** menu and click on the "M200 Settings" button.
- 2 • Click on the "Call and SMS Settings" option.
- 3 • Activate the "Allow ALL calls" function.



If this feature is activated, any number that makes calls to the M200 will activate the relay.

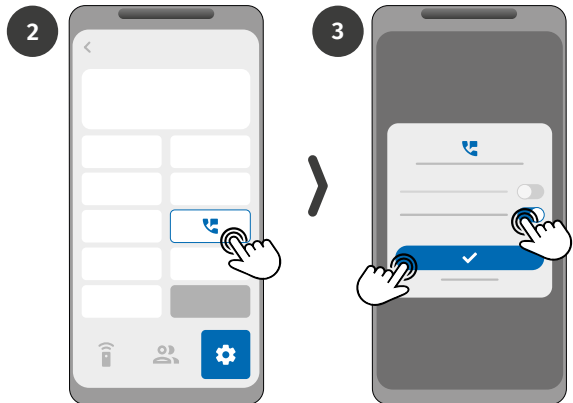
www.torautomatic.hr

DOUBLE AUTHENTICATION OF SMS MESSAGE

This function forces the M200 to verify the number registered in the SMS and the number that sent it. If the functionality is deactivated, only the number registered in the SMS will be verified.

To activate the function:

- 1 • Access the **Settings** menu and click on the "M200 Settings" button.
- 2 • Click on the "Call and SMS Settings" option.
- 3 • Activate the "SMS number confirmation" function.



These features can be configured via Bluetooth or Motorline Portal.

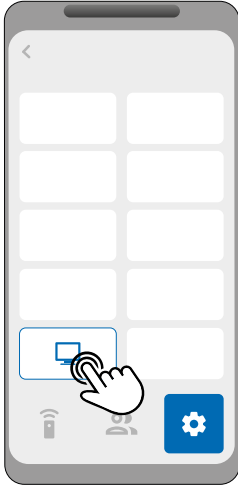
MOTORLINE PORTAL

REGISTRATION ON THE PORTAL



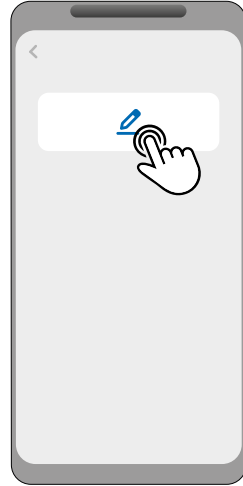
The steps for registering on the portal only work in the M200 application.

1



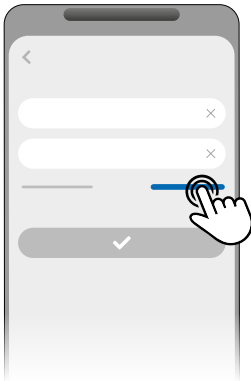
Connect to the M200 via Bluetooth.
Enter the **Settings** menu and click on the
"Portal Motorline" button.

2



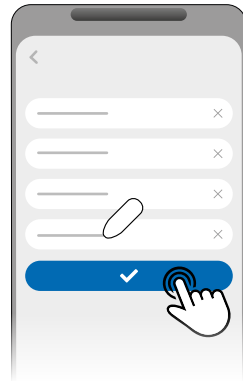
Click on the only button on the screen:
"Register Device".

3



On the Login pages, click "New User?" to
proceed to the registration data.

4

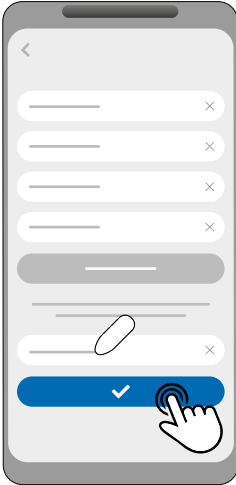


During the registration process you will
have to fill in the necessary fields for
registration: **Name, Email and Password**.

MOTORLINE PORTAL

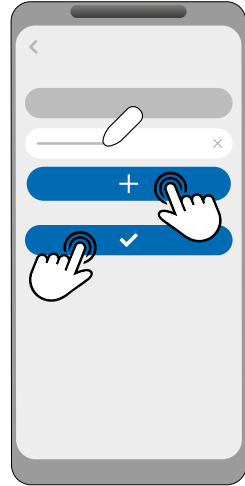
REGISTRATION ON THE PORTAL

5



To validate your registration, you must enter the verification code that will be sent to your email. Click "Confirm". www.torautomatic.hr

6



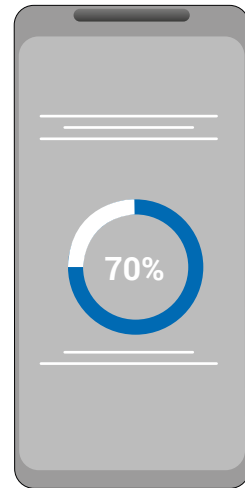
Enter the Device Name and your location to register your device on the Portal. Click "Register".

7



Click "Confirm" for the M200 Firmware update to begin.

8



When the update is complete, the M200 will restart and will be configured in the portal.

MOTORLINE PORTAL

REGISTRATION ON THE PORTAL

After completing portal setup and registration, you can access the Portal to begin managing your device.

Access the portal by reading the QR Code or the following link:

portal.motorline.pt/



MOTORLINE PORTAL



Whenever you **Restore the Device** to factory values, or make an **Owner Change**, it is necessary, using the M200 application, to re-register the device to use the Portal.

www.torautomatic.hr

BACK TO M200 WITHOUT MOBILE DATA | PAUSE IN DATA TRANSMISSION

You can revert the M200 Portal firmware to the version without mobile data or pause the device's data transmission.

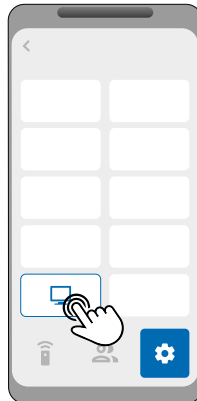
To do this, follow the following steps:

1 • Connect to M200 via Bluetooth. Enter the **Settings** menu and click on the "Portal Motorline" button.

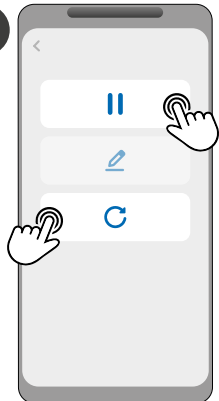
2 • On the screen, select one of the buttons for the action you want:

- **Button 1:** Pause Data Usage
- **Button 2:** Register Device
- **Button 3:** Regress to M200 without 4G

1



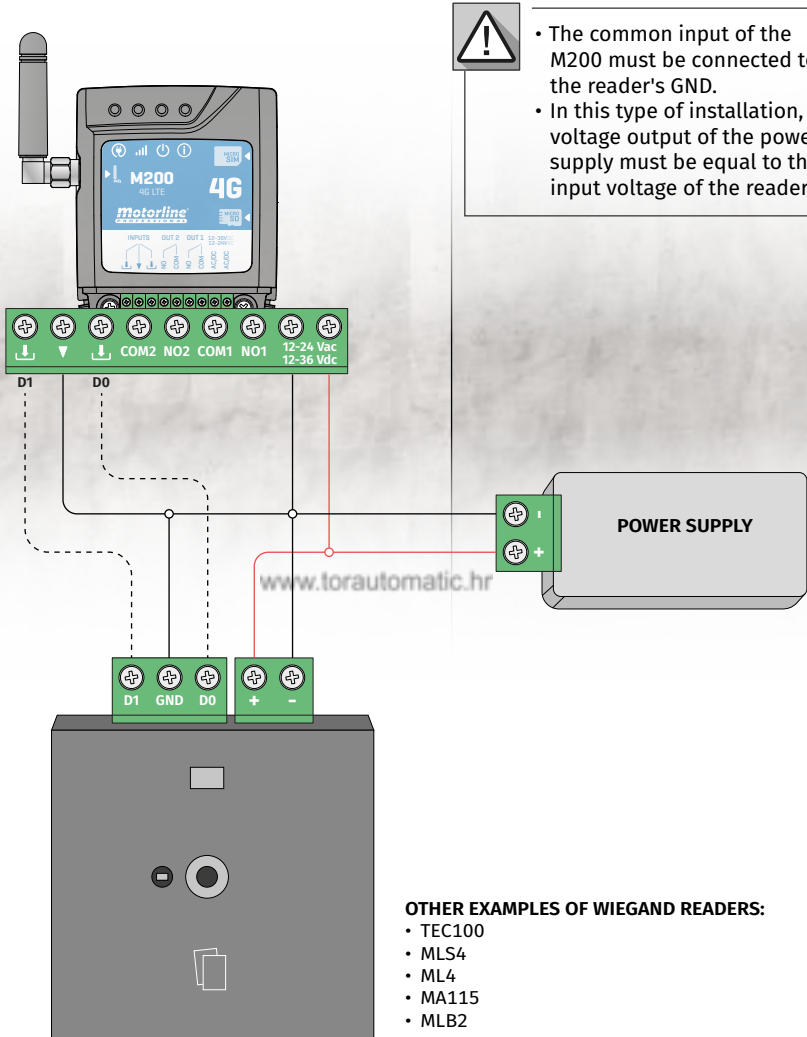
2



When returning to the system without data communication, it will be necessary to update the system firmware again.

MOTORLINE PORTAL

CONFIGURE AS WIEGAND READER



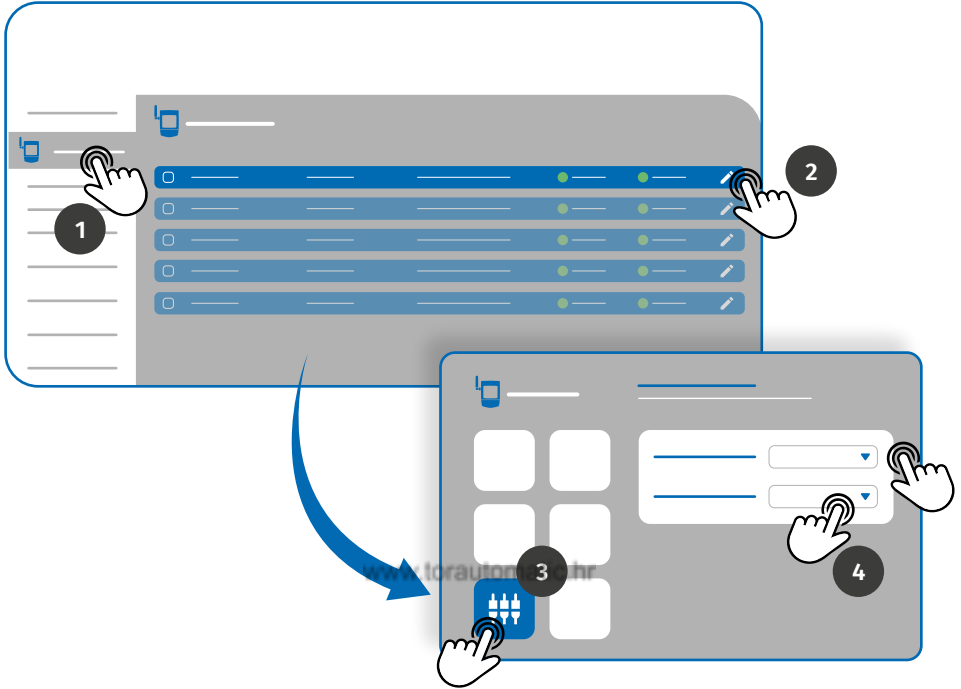
WIEGAND READER
(This reader is just an example)



It is only possible to add Wiegand reader users through the Motorline Portal. It is also possible to edit via bluetooth.

MOTORLINE PORTAL

ACTIVATE READER MODE



To activate "Reader Mode", enter the Motorline Portal and follow the following steps:

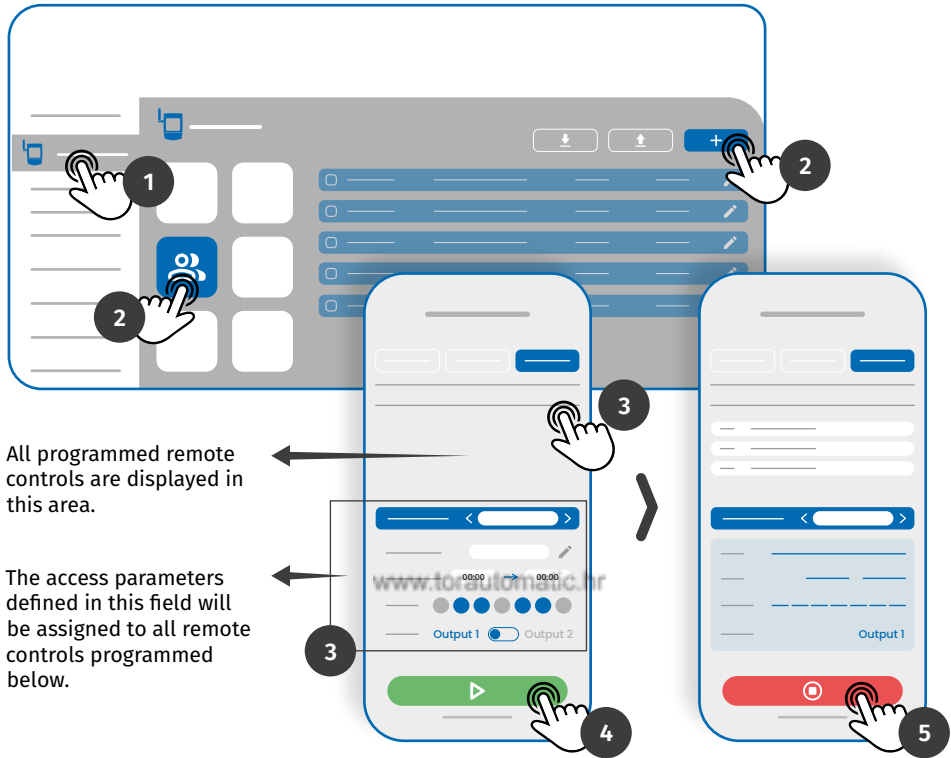
- 1 • Access the **Devices** menu on the left tab of the Portal.
- 2 • Click on the edit icon of the device you want to define as a reader.
- 3 • Access the **Input Settings** menu.
- 4 • Set the **input mode** to Reader and select the **interface** of the reader added on the device.



To add Wiegand device users through the Portal, see pages 53 and 54.

MOTORLINE PORTAL

AUTOMATICALLY ADD USERS TO THE READER



All programmed remote controls are displayed in this area.

The access parameters defined in this field will be assigned to all remote controls programmed below.

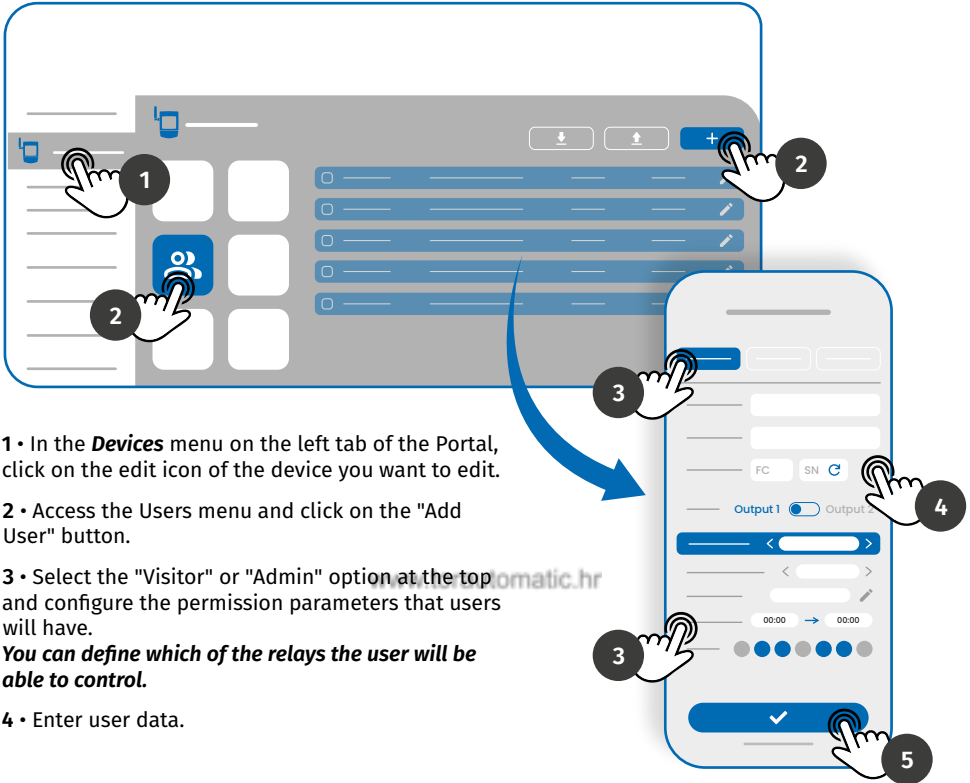
- 1 • In the **Devices** menu on the left tab of the Portal, click on the edit icon of the device you want to edit.
- 2 • Access the **Users** menu and click on the "Add User" button.
- 3 • Select the Multi-reader option at the top and configure the permissions parameters that users will have.
You can define which of the relays the user will be able to control.
- 4 • Click the "Start programming" button and you can start passing remote controls to register on the reader.
- 5 • Click the "Finish programming" button to finish the remote control programming process.



During the programming process, if a remote control is not passed for 15 seconds, the programming mode is automatically interrupted.

MOTORLINE PORTAL

MANUALLY ADD USERS TO THE READER



1 • In the **Devices** menu on the left tab of the Portal, click on the edit icon of the device you want to edit.

2 • Access the Users menu and click on the "Add User" button.


3 • Select the "Visitor" or "Admin" option at the top and configure the permission parameters that users will have.

You can define which of the relays the user will be able to control.

4 • Enter user data.

5 • Click the "SAVE" button to save the remote controls records.




Manually enter the Facility Code (FC - Optional) and Serial Number (SN - Mandatory) or click the  button to ask the system to read it automatically.



Once user registration is completed, the Portal will generate a QR Code that can be downloaded to be used if the readers have the QR Code reading function.



+351 911 911 911	-	All	All
+351 911 911 911	 98-16239780 (rt)	All	All
+351 911 911 911	-	All	All

USE AS ALARM

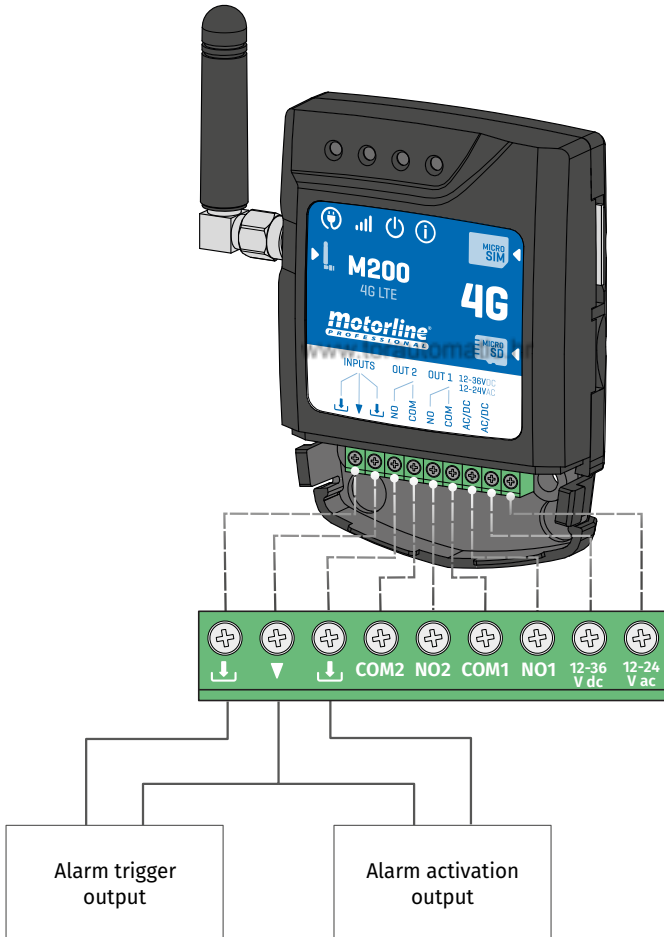
CONFIGURE AS AN ALARM COMMUNICATOR



It is possible to configure **M200** to work as an alarm communicator. In this way, you can activate the alarm by SMS, call or Bluetooth, as well as when the alarm is triggered by intrusion, it calls up to 6 selected numbers.

HOW IT WORKS

Two alarm outputs are required: **Trigger Output** and **Activation Output**



As soon as the alarm is triggered, Input 2 is activated and the system starts making calls to the contact list in order of listing until a contact answers.

USE AS ALARM

MANUALLY ADD USERS TO THE READER



Requires Owner permission.

Relay 1 is associated with Input 1.

Once Relay 1 is activated, Input 1 will wait for a status change for the period defined by the owner:

- **If there is a change of status on Input 1 within the preset time, the M200 will notify that the alarm has been turned on/off;**
- **If there is no change of status, the M200 will notify that Input 1 has not changed within the predefined time.**

ALARM ACTIVATION MODES

Local Mode:

When an alarm status change occurs, and it has not occurred remotely, the 1st contact on the list will receive a message with the alarm status change.

Remote Mode:

When a user actuates Relay 1 remotely, if he does not belong to the list, then the 1st contact on the list will receive a message indicating the alarm change.

If you belong to the list, only you will receive the message.

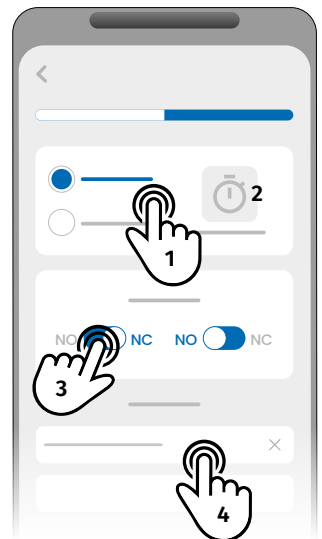
www.torautomatic.hr

CONFIGURATION STEPS

- 1 • Select the desired mode type for the alarm (Local Mode or Remote Mode);
- 2 • Select the Input delay time;
- 3 • Define the status of inputs 1 and 2 (NO or NC);

INPUTS STATUS CONFIGURATION	
NO (Normally Open)	The input has no signal, and notification is sent when there is a device activation (ex: relay, button or sensor).
NC (Normally Closed)	The input has a continuous signal, and notification is sent when the signal is interrupted.

- 4 • Add the contacts of the users who will be part of the Alarm list;
- 5 • Save your changes.



- The contact list has a maximum limit of 6 users.
- There are 8 preset sounds as call alarm sound.

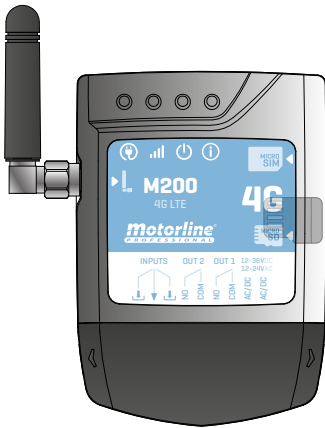
ACCESS HISTORY

ACTIVATE ACCESS HISTORY



To enable access history, simply insert a microSD card (not included) into the corresponding slot on M200. In addition, the microSD card must be in FAT32 format (if necessary, format it on the computer).

You can check the access history directly in the APP or through files stored on the microSD card.



ACCESS REGISTRATION

- 1 • The microSD card automatically generates monthly text files (ex: 01.csv*) with a record of **all accesses in the last 12 months**.
- 02 • At the end of the 12 months, the oldest file is replaced by a new file with the same name.

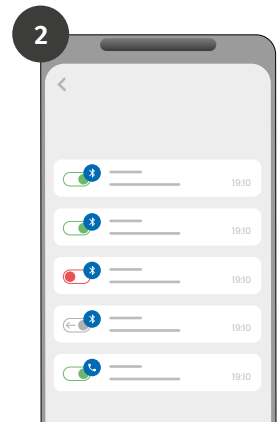
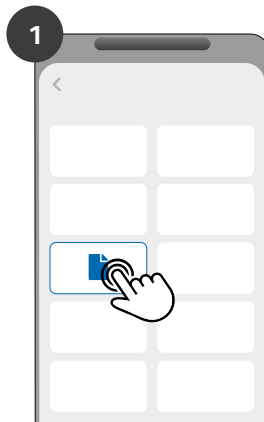
*It starts at 01.csv which corresponds to January and so on until 12.csv (December).

www.torautomatic.hr

CHECK HISTORY IN THE APP

1 • Press the "History" button.

2 • On this page you can check the access history.

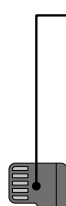


It is possible to register the last 12 months with all the accesses that were made to the device. Whether access via **phone calls, Bluetooth, SMS or Routines**.

ACCESS HISTORY

RECORD OF HISTORY IN CSV FILE

EXAMPLE OF REGISTRATION FILE



NAME; CELL PHONE; RELAY NUMBER; RELAY STATUS; DATE; HOUR; TYPE; ERROR

```
User1;911222333;R1;PULSE;15/10/2022;09:47;BLE
User2;911222444;R2;ON;15/10/2022;09:53;BLE
User2;911222444;R2;OFF;16/10/2022;11:23;CALL
User1;911222333;R1;PULSE;16/10/2022;15:45;SMS
User3;911222555;R2;ON;16/10/2022;18:31;BLE
User1;911222333;R1;PULSE;17/10/2022;06:46;CALL
User4;911222666;R2;NO CHANGE;17/10/2022;15:58;SMS;ERROR! USER
WITHOUT PERMISSION
User3;911222555;R1;PULSE;18/10/2022;10:02;SMS
User1;911222333;R2;OFF;18/10/2022;13:10;BLE
User3;911222555;R1;PULSE;18/10/2022;18:24;CALL
```

REGISTRATION FILE LEGEND

COLUMN	EXAMPLE	POSSIBLE VALUES
1	User4	Name of the User who performed the operation or "ROUTINE"
2	911222333	User number that performed the operation or empty if it is a routine
3	R2	R1 - Relay 1 R2 - Relay 2
4	NO CHANGE	PULSE - In case the Relay is in the type bistable impulse ON - In case the Relay is in the type monostable impulse OFF - In case the Relay is in the type monostable impulse NO CHANGE - No change has occurred in the relay
5	17 / 10 / 2022	Date of operation
6	15:58	Time of operation
7	SMS	BLE - Operation carried out via Bluetooth SMS - Operation carried out via SMS CALL - Operation carried out via call
8	ERROR! USER WITHOUT PERMISSON	Error messages

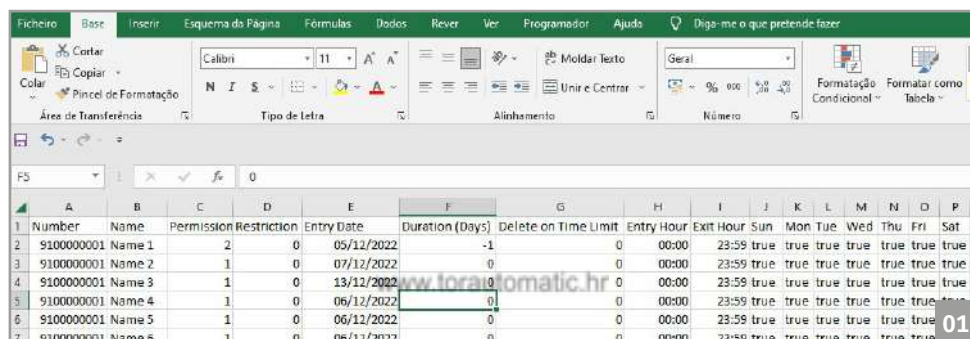
IMPORT/EXPORT USERS

CREATE A LIST OF USERS THROUGH EXCEL

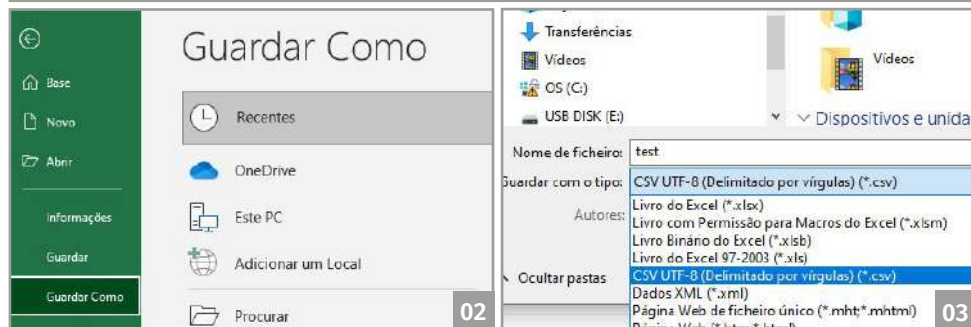
We suggest that, initially, you download the Excel file on the app, and fill in the data in the downloaded file, avoiding any formatting errors.

Before importing users, it is recommended to download the Excel file through the application, so that all fields are filled in correctly.

- 1 • Press "Export users" and choose the destination for the file.
- 2 • Transfer the file to your computer so that you can register new users.
- 3 • Fill in the data according to the Excel headers (see image 01).
- 4 • Save the file in the "CSV UTF-8" format (Comma delimited) (see image 02 and 03).
- 5 • Transfer this file to your phone.



Number	Name	Permission	Restriction	Entry Date	Duration (Days)	Delete on Time Limit	Entry Hour	Exit Hour	Sun	Mon	Tue	Wed	Thu	Fri	Sat
9100000001	Name 1	2	0	05/12/2022	-1	0	00:00	23:59	true	true	true	true	true	true	true
9100000001	Name 2	1	0	07/12/2022	0	0	00:00	23:59	true	true	true	true	true	true	true
9100000001	Name 3	1	0	13/12/2022	0	0	00:00	23:59	true	true	true	true	true	true	true
9100000001	Name 4	1	0	06/12/2022	0	0	00:00	23:59	true	true	true	true	true	true	true
9100000001	Name 5	1	0	06/12/2022	0	0	00:00	23:59	true	true	true	true	true	true	true
9100000001	Name 6	1	0	06/12/2022	0	0	00:00	23:59	true	true	true	true	true	true	true

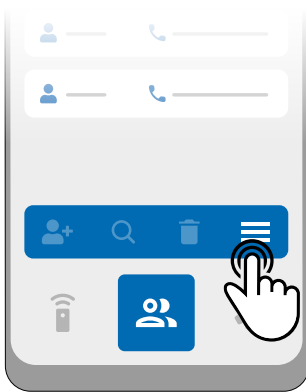


IMPORT/EXPORT USERS

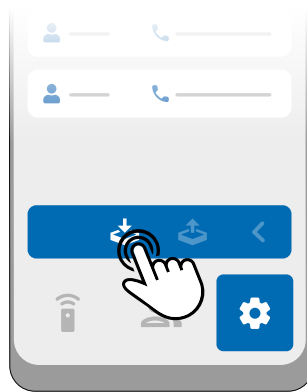
INFORMATION TO USE IN THE EXCEL DOCUMENT

COLUMN A	User Number
COLUMN B	User Name (max. 20 characters)
COLUMN C	Permission Level: 0 (User); 1 (Administrator); 2 (Owner)
COLUMN D	Relay Restriction: 0 (no restriction); 1 (restricting relay 1); 2 (restricting relay 2)
COLUMN E	Initial Date (Format: DD/MM/YYYY)
COLUMN F	Duration in Days: -1 (no limit, max. 90 days); 0 - 90
COLUMN G	Visitor Continuity: 0 (does not delete); 1 (delete)
COLUMN H	Start Time (Format: HH:MM)
COLUMN I	Exit Time (Format: HH:MM)
COLUMN J	Permission for Sunday (true or false)
COLUMN K	Permission for Monday (true or false)
COLUMN L	Permission for Tuesday (true or false)
COLUMN M	Permission for Wednesday (true or false)
COLUMN N	Permission for Thursday (true or false)
COLUMN O	Permission for Friday (true or false)
COLUMN P	Permission for Saturday (true or false)

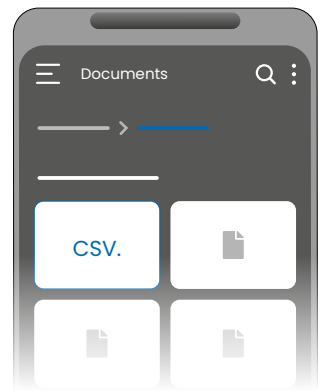
UPLOAD THE LIST AND SEND IT TO THE DEVICE



1 • In the Users menu, press on "More options".



2 • Click on "Import users".



3 • Select the CSV file to import and wait for the operation to complete.

TROUBLESHOOTING

INSTRUCTIONS FOR CONSUMERS • SPECIALISED TECHNICIANS

Anomaly	I added a number but I cannot activate the output via phone call.		I cannot make calls or send SMS.	Access restriction does not conform to the defined time interval.	The routine was not executed.
Procedure	<ol style="list-style-type: none"> Connect via Bluetooth application to the device and list the users. Check that the number appears in the list and that it appears exactly as you entered it. 		<ol style="list-style-type: none"> Check if the mobile phone can make a call. 	<ol style="list-style-type: none"> Connect via Bluetooth and check the date and time set on M200. Adjust the time and date in case of errors. Recheck the time. Verify that the constraint works. 	<ol style="list-style-type: none"> Import M200 routines. Check that they were recorded correctly. If they were recorded correctly, check the time on M200. Finally, record your routines again.
Behavior	It doesn't appear on the list.	The number appears in the list and it is as entered.	In case the call goes to the mailbox.	The app will indicate the system time.	Routines may run incorrectly if M200's clock is misconfigured.

Discovering the origin of the problem	<p>Try adding the number again. Check if:</p> <ol style="list-style-type: none"> The number consists of digits only (without any spaces or other characters*). The telephone number does not exceed 15 digits. The settings for that number are correct. <p>*The system accepts the '+' character if the number has a prefix.</p>	<ol style="list-style-type: none"> Make the phone call again. Check which number made the last call. Compare that number with the one you added to the device. 	<ol style="list-style-type: none"> Make sure the card has a PIN code. If so, remove the code. If you don't have a PIN code, remove the card and insert it again so that M200 can register it on the network. When the ACT LED shows the network signal again, try to make a call. If it is still not possible, wait for about 30 seconds and try again as M200 may still be registering on the network. 	<ol style="list-style-type: none"> If the displayed time is wrong, check the mobile phone time and your time zone. 	<ol style="list-style-type: none"> Check M200's time and make sure the routines were recorded correctly.
--	--	---	--	---	---

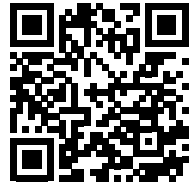
CONFORMITY DECLARATION

Simplified EU Declaration of Conformity

The undersigned **MOTORLINE ELECTROCELOS, S.A.**, with registered office at **Travessa do Sobreiro, n.º 29, 4755-474 Rio Côvo (Santa Eugénia), Barcelos**, declares that the present type of radio equipment - **M200 Communicator** - ecomplies with the Directive 2014/53/EU.

The full text of the declaration of conformity is available at the following internet address:

<https://motorline.pt/certification/m200>



www.torautomatic.hr